




**new
products
inside**

slee solutions
for
pathology

PRODUCT CATALOG

DESIGN &
MANUFACTURING
MADE IN GERMANY





***We are committed to
teamwork and support;
we give our best
to provide both to our clients
day by day!”***

Stefan Schock • CEO
Slee – Solutions for pathology

Providing the best histopathology solutions is our passion, our know-how and our craft.

We stand for top technology, high quality standards and consistent customer support. From the invention of the world's first cryostat back in the year 1954 by our company founder Kenneth Slee until today, we focus on improving the microscopic sample preparation process. The everyday needs of our global users are top priority to us.

Our headquarter with design center and product manufacturing is located in the Rhine-Main area for decades. A location in the center of Germany with highest expertise in science, research and high-tech manufacturing to get benefited from the German tradition in top quality and high-precision products.

Our company culture stands out for the sense of responsibility towards our clients, employees, suppliers and business partners. As a globally oriented company we love to fuse our expertise in the field with the various perspectives of our global customers, thus being one of the most reliable partners in histopathology labs, in more than 100 countries worldwide.

Stefan Schock
Managing Director



Content

Tissue processors	6	Staining systems	84
MTP · Carousel tissue processor	8	MSM · Carousel slide stainer	86
MTM I / II · Vacuum tissue processor	10	Cromatec I / II · Flexible staining system with highest throughput	88
Embedding centers	14	MAS · Multi protocol stainer	96
MPS P I · Compact paraffin embedding center	16	Coverslippers	100
MPS P II · Modular paraffin embedding center	18	MCS I · Coverslipper (to be combined with MAS)	102
MPS P · Dispensing module	20	Centrifuges	104
MPS W · Pre-warming module	22	CS I / II · Cytocentrifuge	106
MPS C / CX · Cooling module	24	Accessories	110
Microtomes	26	Printers	114
CUT 4062 · Manual precision microtome	30	Printtec S · Slide printer	118
CUT 5062 · Semi-automatic precision microtome	34	Printtec C · Single cassette printer	122
CUT 6062 · Fully-automatic precision microtome	38	Autoloader · for batch printing and color variations	126
Aquatec · Transfer system for microtomes of CUT series	44	Ergonomic workplaces	130
Accessories	46	Ergosit · Laboratory chair	132
Cuttec S · Manual sliding microtome	50	Ergotec · Worktable	134
Polycut Legacy · Heavy duty microtome	54	Consumables	138
Accessories	58	Disposable blades · plasma coated	139
Control unit	60	Paraffin for tissue embedding ·	
LN2 liquid nitrogen	62	Paratec Premium	140
Cryostats	70	Slides / coverslips	141
MEV / MEV + · Routine cryostats	74	Consumables for cryostats	141
MNT · High-end cryostat	77	Service	142
Accessories	79		
Water baths & slide warmers	80		
Slidetec Water / Heat	82		
Slidetec Heat	82		
Slidetec Water	83		
Slidetec Water S	83		

Some of the images in this catalog may show special equipment and / or accessories that are subject to a charge. The image may differ slightly in appearance from the product. Errors excepted. Subject to changes and improvements without further notice.

Tissue processors

Slee tissue processors stand for gentle and safe specimen processing. The tissue processors from Slee are optimally adapted to the needs of a wide variety of laboratories.





MTP

Carousel tissue processor

MTM

Vacuum tissue processor

MTP

Carousel tissue processor

The **MTP** carousel tissue processor guarantees gentle and highly reliable specimen processing in connection with state of the art control features. The specimen throughput can be doubled to 240 cassettes per run with a second transport basket. To improve the processing of tissues, the device can optionally be equipped with vacuum units for all paraffin beakers. An integrated battery ensures highest process safety even in environments with frequent power failures.



MTP

Highlights

- Unique rotating reagent beaker table principle allows access to cassette basket(s) and beakers from front
- Integrated uninterruptible power supply
- Up to 240 cassettes per run (optional)
- System status monitor display and status LEDs
- Password protection
- Intuitive control panel
- Delayed start function
- Remote alarm modul
- Integrated fume hood and ventilation system with carbon filter

Item No.**MTP 100 – 230 V, 50/60 Hz**

11000200

Standard components**Reagent beakers** (plastic [POM], white, 10 pcs.)**Heated paraffin beakers** (aluminum, 2 pcs.)**Transport basket** (stainless steel, 1 pcs.)**Labelling set** for reagent beakers (1 pcs.)**Transport basket lid** (1 pcs.)**Mains cable****Manual****Specifications****Reagent beakers** capacity plastic [POM], white
2,000 ml**Heated paraffin beakers** capacity aluminum, anodized,
double walled
2,000 ml**Transport basket** capacity stainless steel
up to 120 standard cassettes**Programming** 20 programs,
freely programmable**Electrical parameters** 100 - 230 V, 50/60 Hz**Dimensions** (w x d x h) 850 x 850 x 750 mm**Weight** w/o accessories 80 kg**Options****Item No.****Fume hood** for MTP / MSM (Perspex) 11000220**Vacuum unit** (paraffin) 11000223
1 process basket and 2 paraffin beakers**Vacuum unit** (paraffin) 11000224
2 process baskets and 3 paraffin beakers
(only in combination with 11000221)**Vacuum unit** (reagent & paraffin) 11000225
1 process basket and 2 paraffin beakers**Vacuum unit** (reagent & paraffin) 11000226
2 process baskets and 3 paraffin beakers
(only in combination with 11000221)**All reagent beakers** (aluminum) 11000222**Remote alarm module** (GSM) 11000273**TWIN basket** for MTP 11000221**Exhaust fan system** 11000211
incl. carbon filter**Optional accessories****Item No.****Reagent beaker** (aluminum, 1 pcs.) 11000229**Reagent beaker** (plastic [POM], white, 1 pcs.) 11000251**Heated paraffin beaker** (aluminum) 11000252**Transport basket** (stainless steel) 11000253
incl. holder and lid**Carbon filter** (spare) 11000254**Organizer cartridge** (stainless steel, 1 pcs.) 11000255
for 65 cassettes

MTM I / II

Vacuum tissue processor

The Slee vacuum tissue processors **MTM I** and **MTM II** combine state of the art technology with comfortable handling and design. The tissue processor **MTM II** also offers a cost-efficient and user-friendly alternative for the fast specimen processing.

With the innovative EHE element (enhanced heat exchanger), the MTM II is the fastest and gentlest tissue processor without using microwaves with potential negative effects.

The system can be operated with traditional reagents or with most of the xylene and ethyl alcohol substitutes available on the market.

A user-friendly reagent management system and an optimized cleaning cycle routine are the basis for high cost efficiency and high turn-over. Simplify the daily laboratory routine. Process safety is guaranteed with an intelligent remote alarm system that communicates via mobile or internet.

Two functionalities – one device

Short processing time

45 minutes / run biopsies

High sample turnover

300 samples / run routine

Highlights

- Safe and fast tissue processing with prewarmed reagents
- Fully automatic reagent management system
- Automatic cleaning cycles
- Intuitive control via 15"-TFT-display
- Active carbon filter supported ventilation
- Remote alarm system (GSM)
- Decreasing aging factor (DAF) function for reagent economy and processing safety
- Remote fill- / drain feature

Item No.

MTM I 230 V, 50/60 Hz

Vacuum tissue processor

11000500

MTM II 230 V, 50/60 Hz

Fast vacuum tissue processor

11000600

MTM I 115 V, 60 Hz

Vacuum tissue processor

11000501

MTM II 115 V, 60 Hz

Fast vacuum tissue processor

11000601



MTM I



MTM II



Intuitive control via 15"-TFT-display

Standard components	MTM I	MTM II
EHE element for preheated reagents		✓
15"-TFT-display with touchscreen	✓	✓
2 cassette baskets (stainless steel, 150 cassettes each)	✓	✓
Reagent bottles (10 pcs.)	✓	✓
Paraffin bottles (4 + 1 pcs.)	✓	✓
Cleaning reagent bottles (2 pcs.)	✓	✓
Remote fill / drain tubings	✓	✓
Charcoal filter bottle	✓	✓
Condensate bottle	✓	✓
Mains cable	✓	✓
Manual	✓	✓

Specifications	MTM I	MTM II
Sample processing chamber capacity	300 standard cassettes	
Sample processing chamber temperature	up to 65 °C	
Reagent bottles	10 (2.5 l each)	
Paraffin bottles (quantity and capacity)	4 + 1 (2.5 l each)	
Electrical parameters	1,000 W	1,500 W
	115 or 230 V, 50/60 Hz	
Dimensions (w x d x h)		
w/o monitor	720 x 700 x 1,080 mm	
with monitor	720 x 700 x 1,400 mm	
Weight (w/o accessories)	120 kg	135 kg

Optional accessories MTM I + II	Item No.
Cassette basket	39600061
Holder for cassette basket	39600062
Reagent bottle (2 necks)	39600030
Refill pack active carbon	39600268
Uninterruptible power supply (UPS) 230 V · 1,500 VA · 1,200 W (MTM I)	11000510
Uninterruptible power supply (UPS) 230 V · 2,200 VA · 1,760 W (MTM II)	11000504
Remote alarm system (GSM)	11000272

Embedding centers

Slee offers two ergonomic embedding centers for an optimized workflow for any lab size. **MPS P I** is a compact paraffin embedding center for space-saving setup, **MPS P II** is a modular system with maximum capacity and flexibility.





MPS P I

Compact paraffin embedding center

MPS P II

Modular paraffin embedding center with maximum capacity

MPS P I Compact paraffin embedding center

The space saving **MPS P I** is a complete paraffin dispensing unit including a 3.8 l paraffin container, two pre-warming areas for cassettes and molds, a heated working area and a cooling spot. The ergonomically elevated heated working area is illuminated by an adjustable LED light and allows comfortable embedding of specimens. The device comes with well-insulated, spacious hand rests. All functions of the device are controlled by an intuitive control panel including programmable working hours. Two heated trays provide a pre-warming capacity of 120 cassettes and 250 embedding molds each, summing up to a capacity of up to 240 cassettes or 500 embedding molds.

The paraffin flow can be activated manually or via foot switch, and has an adjustable flow rate. All under control: programming of temperature, working day, working time, time and date.

Highlights

- Manual lever and foot switch for paraffin dispensing, adjustable flow rate
- Spacious cooling spot
- Integrated magnifier, adjustable
- Insulated hand rest for optimized work ergonomics
- Spacious and heated paraffin collection tray
- 3.8 liters paraffin container
- Programmable operating times
- Easily adjustable forceps holders, magnetic
- LED illumination, adjustable
- Intuitive control panel
- Integrated heated wax trimmer, efficiently removes excess paraffin from any embedding tissue cassette
- Two pre-warmed areas for up to 240 cassettes or 500 embedding molds
- Integrated connection for a large variety of electrically heated forceps



Item No.

MPS P I 230 V, 50/60 Hz 10190000

MPS P I 115 V, 60 Hz 10192000

Standard components

Pre-warming and dispensing module**Foot switch** for paraffin dispenser**Magnifier**, adjustable**Paraffin collection tray****Forceps holders**, 2 pcs. for 3 forceps each, magnetic**Forceps** (1 x blunt, 1 x pointed)**Cleaning spatula**, black**Base molds 7 x 7 x 7 mm** (stainless steel, 12 pcs.)**Base molds 24 x 24 x 7 mm** (stainless steel, 12 pcs.)**Mains cable****Manual**

Optional accessories

Item No.**Electrically heated forceps 0.5 - 4 mm**

(straight, curved or angled)

on demand

Base molds see MPS P

Flexible

Forceps can be freely placed in the holders with a capacity of three forceps each. Electrical forceps can be connected optionally.



Specifications

Temperature range up to 80 °C, programmable**Cooling spot** 50 x 50 mm, min. -5 °C, fix**Paraffin container**
(capacity) 3.8 l**Pre-warming area I**
(w x d x h) up to 120 cassettes
removable tray 125 x 205 x 40 mm**Pre-warming area II**
(w x d x h) up to 250 molds
removable tray 125 x 205 x 40 mm**Capacity pre-warming areas in total** up to 240 cassettes /
up to 500 molds**Forceps holders 2 x 3** magnetic**Electrical parameters** 115 V, 60 Hz | 230 V, 50/60 Hz**Dimensions** (w x d x h) 450 x 570 x 295 mm**Working area** (w x d) 450 x 240 mm**Weight** w/o accessories 22 kg

Everything within reach

Two heated trays, for either 120 standard cassettes or 250 embedding molds are easily accessible, with a max. capacity of up to 240 cassettes or 500 embedding molds.



MPS P II Modular paraffin embedding center

The modular paraffin embedding center **MPS P II** features ease of operation, spacious working area, large paraffin container capacity. All modules operate at the same working height and can be arranged accordingly to workflow requirements. The flexible 3-module system consists of a dispensing element **MPS P**, a pre-warming module **MPS W** and a cooling plate **MPS C** or **MPS CX**.

Highlights

- Manual lever and foot switch for paraffin dispensing
- Spacious cooling spot
- Magnifier, adjustable
- Insulated hand rest for optimized work ergonomics
- Spacious and heated paraffin collection tray
- Paraffin container, volume 5.5 liters
- Programmable operating times
- Magnetic forceps holders, easily adjustable
- LED-illumination, adjustable
- Intuitive control panel
- Integrated heated wax trimmer, efficiently removes excess paraffin from any embedding tissue cassette
- Integrated connection for a large variety of electrically heated forceps



Item No.

MPS P II 230 V, 50/60 Hz 10185000

MPS P II 115 V, 60 Hz 10187000

Standard components

Dispensing module MPS P

Pre-warming module MPS W

Cooling module MPS C for 80 cassettes

Foot switch for paraffin dispenser

Magnifier, adjustable

Paraffin collection tray

Forceps holder

Forceps (1 x blunt, 1 x pointed)

Cleaning spatula, black

Base molds 7 x 7 x 7 mm (stainless steel, 12 pcs.)

Base molds 24 x 24 x 7 mm (stainless steel, 12 pcs.)

Mains cable

Manual



MPS P

Dispensing module



MPS P

Item No.**MPS P 230 V, 50/60 Hz** 10170000**MPS P 115 V, 60 Hz** 10172000**Optional accessories****Item No.****Electrically heated forceps 0.5 - 4 mm**
(straight, curved or angled) on demand**Base molds** (stainless steel, 12 pcs.)
7 x 7 x 7 mm 30030050**Base molds** (stainless steel, 12 pcs.)
30 x 24 x 7 mm 30030051**Base molds** (stainless steel, 12 pcs.)
15 x 15 x 7 mm 30030052**Base molds** (stainless steel, 12 pcs.)
24 x 24 x 7 mm 30030053**Base molds** (stainless steel, 12 pcs.)
37 x 24 x 7 mm 30030054**Base molds** (stainless steel)
Further sizes on demand**Specifications****Temperature range** up to 80 °C (paraffin container),
up to 80 °C (working area),
programmable**Paraffin capacity** 5.5 l**Cooling spot** 50 x 50 mm, min. -5 °C, fix**Forceps holders** 2 x 4 adjustable (magnetic)**Illumination** 3 LED spots, fixed
3 LED spots, adjustable**Magnifier** included, adjustable**Paraffin flow** activation manually or via foot
switch, adjustable flow rate**Control** programming of temperature,
working day, working time, time
and date**Electrical parameters** 115 V, 60 Hz | 230 V, 50/60 Hz**Dimensions** (w x d x h) 450 x 600 x 290 mm**Working area** (w x d) 450 x 240 mm**Weight** 18 kg**High
throughput**

Large working area with integrated cooling spot. The working area has a special drainage system and guides excess paraffin into the extractable collection tray. The surface remains clean. This makes working and cleaning much easier.

**Perfect
workflow**

The large-volume 5.5 l paraffin container allows a constant workflow. With perfectly adjusted light and easy to regulate flow, you will achieve excellent work results.

MPS W

Pre-warming module



MPS W

Pre-warming for molds



To have enough molds ready, the MPS W has a mold warmer for up to 500 molds. Temperature freely selectable up to 80 °C.

Pre-warming for cassettes



Take common baskets (like from the MTM tissue processor) and place them directly into the cassette area. The MPS W has a retractable lid for easy filling and operation.

Easy to clean



The cassette tray can be taken out for cleaning. So, disposal of paraffin is easy.

Item No.

MPS W 230 V, 50/60 Hz 10180000

MPS W 115 V, 60 Hz 10182000

Specifications

Heated cassette area (w x d x h)
removable tray up to 320 cassettes
255 x 265 x 55 mm

Heated mold area
(w x d x h) up to 500 molds
260 x 220 x 70 mm

Temperature range up to 80 °C (working areas)

programming
of temperature, working
day, working time,
time and date

Control

Electrical parameters 115 V, 60 Hz | 230 V, 50/60 Hz

Dimensions (w x d x h) 300 x 600 x 290 mm

Weight w/o accessories 15 kg

MPS C / CX

Cooling module



MPS C



MPS CX

	Item No.
MPS C 230 V, 50 Hz	10175000
MPS C 115 V, 60 Hz	10177000

	Item No.
MPS CX 230 V, 50 Hz	10175020
MPS CX 115 V, 60 Hz	10177020

Specifications MPS C

Temperature range	down to -15 °C
Cassette capacity	up to 80 cassettes
Control	programming of temperature, working day, working time, time and date
Dimensions (w x d x h)	400 x 600 x 290 mm
Cooling area (w x d)	370 x 270 mm
Electrical parameters	115 V, 60 Hz 230 V, 50 Hz
Weight	26 kg

Specifications MPS CX

Temperature range	down to -15 °C
Cassette capacity	up to 120 cassettes
Control	programming of temperature, working day, working time, time and date
Dimensions (w x d x h)	600 x 600 x 290 mm
Cooling area (w x d)	570 x 270 mm
Electrical parameters	115 V, 60 Hz 230 V, 50 Hz
Weight	35 kg

Optional accessories

	Item No.
Transparent hood for cooling area MPS C	10175100

Optional accessories

	Item No.
Transparent hood for cooling area MPS CX	on demand

Avoid icing



If you work in environments with high humidity ice formation on the cooling plate can occur. To avoid this, a transparent hood with sliding lid is optionally available.

Independent



With individual controls of temperature and working hours the MPS C and MPS CX are perfectly suited to be set up next to a microtome or an embedding station.





Microtomes

The high-precision rotary microtomes range from a manual unit, type **CUT 4062**, to the semi-automatic type **CUT 5062** and to the fully automatic type **CUT 6062**. The range is completed by the manual sliding microtome type **Cuttec S** and the automated heavy-duty sliding microtome **Polycut Legacy**.

All microtomes are equipped with high-precision guideways and micrometer feed mechanism to ensure highest stability and precision. A huge variety of accessories offers the possibility and flexibility to customize your equipment and allows the use for any type of material or specimen in medical research, routine diagnostics or industrial applications.

Overview

Rotary microtomes



CUT 4062



CUT 5062



CUT 6062

CUT 4062

Manual precision microtome

Disposable blade holder

(alternatively: standard knife holder)

Manual, mechanical trimming function in 4 steps,

10; 20; 30; 40 μm

Manual feed with ergonomically located coarse feed wheel

Specimen orientation

Acoustic signal at end positions

Automatic specimen retraction

Options

Section counter, reverse coarse feed,
2nd handwheel brake

Specifications

Cutting thickness 0.5 - 60 μm

Horizontal advance 28 mm

Vertical stroke 60 mm

Specimen orientation

x/y axis 8°

Rotation 360°

560 x 550 x 325 mm (w x d x h)

33 kg

CUT 5062

Semi-automatic precision microtome

Disposable blade holder

(alternatively: standard knife holder)

Motorized trimming function,

5 - 750 µm

Specimen orientation

2 specimen feed memory positions via button

Automatic motorized specimen retraction (adjustable)

Options

2nd handwheel brake

Specifications

Cutting thickness 0.5 - 100 µm

Horizontal advance 28 mm

Vertical stroke 72 mm

Specimen orientation

x/y axis 8°

Rotation 360°

520 x 600 x 325 mm (w x d x h)

33 kg

CUT 6062

Fully-automatic precision microtome

Disposable blade holder

(alternatively: standard knife holder)

Motorized trimming function,

5 - 750 µm

Motorized sectioning (4 cutting motor modes (single stroke, continuous, step, program))

Specimen orientation

2 specimen feed memory positions via button

Automatic motorized specimen retraction (adjustable)

Options

2nd handwheel brake

Specifications

Cutting thickness 0.5 - 100 µm

Horizontal advance 28 mm

Vertical stroke 72 mm

Cutting speed variable

up to 450 mm/s

Specimen orientation

x/y axis 8°

Rotation 360°

520 x 600 x 325 mm (w x d x h)

34 kg

CUT 4062 Manual precision microtome

The Slee precision microtome **CUT 4062** is designed for all applications in routine, research or industry. Years of experience and customer input have contributed to create one of the best manual microtomes available. The **CUT 4062** combines highest precision with user friendliness as well as best comfort. Like all Slee microtomes, the **CUT 4062** comes with a complete set of standard components which can be individually adapted to customer's needs, ready to be used out of the box.



Highlights

- Ergonomic design
- Spacious, integrated section waste tray
- Wide range of accessories
- Handwheel lock in any position
- Blade holder levers changeable (for left-handed users)
- Specimen retraction
- Digital section counter
- Second handwheel brake
- Coarse feed wheel reversible direction (on demand)
- Lateral blade holder movement
- 4 trimming steps (10, 20, 30, 40 μm)
- Acoustic end position alarm
- Top compartment usable as an accessory tray

Item No.

CUT 4062

10065000

Standard components

Specimen orientation

Universal cassette clamp, orientable
(alternatively: standard specimen clamp, orientable)

Disposable blade holder

(alternatively: standard knife holder)

Section waste tray

Disposable blades, low profile
(1 box, 50 pcs.)

Dust cover

Manual

Specifications

Section thickness range 0.5 - 60 μm

Section thickness settings 0.5 - 2 μm in 0.5- μm -steps
2 - 10 μm in 1- μm -steps
10 - 60 μm in 2- μm -steps

Trim thickness settings 10 μm , 20 μm , 30 μm ,
40 μm

Horizontal advance 28 mm

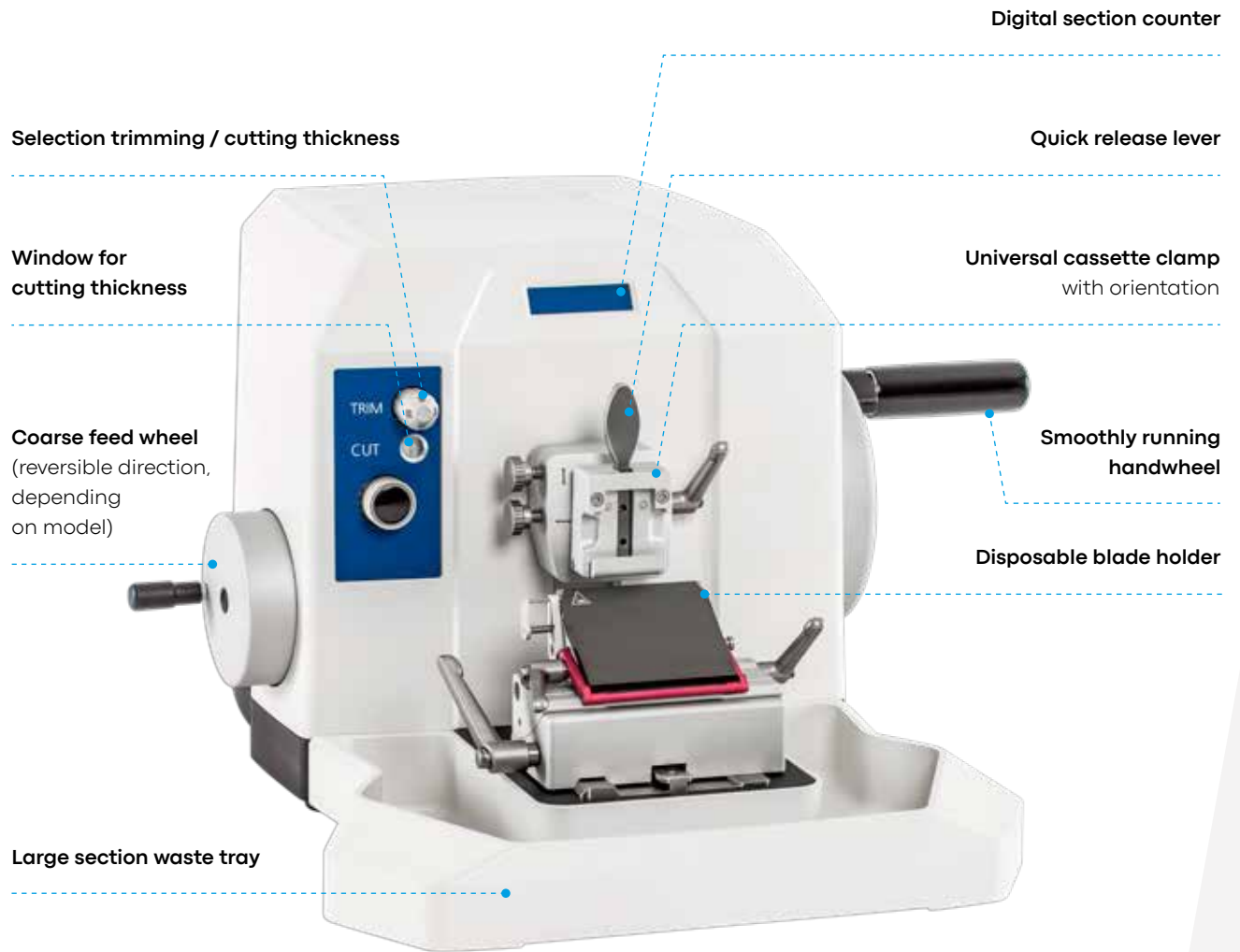
Vertical stroke 60 mm

Specimen retraction automatic

Specimen orientation x/y axis $\pm 8^\circ$, rotation 360°

Dimensions (w x d x h) 560 x 550 x 325 mm

Weight 33 kg



Optional accessories

Item No.

Aquatec system	10090056
MTR bench top quick freezing unit	10110000
Magnifier with illumination (dimmbable)	10090060
2nd lock handwheel	10090024
TC65 disposable blade holder (for tungsten carbide blades)	10090041
Tungsten carbide blade (1 pcs.)	28406000
Disposable blades (cf. consumables)	
Brush set (7 pcs., size 2 - 16)	30001031
Glass knife holder (for triangle glass knives)	10090014
Segment arc incl. universal sample holder (for glass knife holder application)	10090015

new

Optional accessories

Item No.

Super Mega cassette clamp, orientable	10090027
Super Mega cassette clamp, fixed	10090021
Standard specimen clamp, orientable	10090006
Standard specimen clamp, fixed	10090007
Foil clamp (use in standard specimen clamp)	10090025
Standard knife holder (top part), incl. knife holder basis	10090008
Prism (set)	10090017
Round specimen holders (different diameters)	on demand
Section counter	10090020
More on request	

Easy to use



Trim and cutting thickness are easily adjustable via the centrally located controls. Through the viewing window the set cutting thickness can be seen at any time.

Section counter



Optional digital section counter at eye level.

CUT 5062 Semi-automatic precision microtome

The Slee semi-automatic precision microtome **CUT 5062** is designed for all applications in routine, research or industry. Years of experience and customer input have contributed to create one of the best semi-automatic microtomes available. The **CUT 5062** combines highest precision with user friendliness as well as best comfort. Like all Slee microtomes, the **CUT 5062** comes with a complete set of standard components which can be individually adapted to customer's needs, ready to be used out of the box.



Highlights

- Ergonomic design
- Spacious, integrated section waste tray
- Wide range of accessories
- Intuitive control panel
- Handwheel lock in any position
- Blade holder levers changeable (for left-handed users)
- 2 operation modes (standard and rocking mode)
- Motorized trimming up to 750 μm , programmable
- Motorized advance / return of specimen (2 speeds)
- Display of section counter, section sum and remaining travel
- Tip function for precise specimen approach
- 2 specimen feed memory positions
- Variable retraction
- External control panel
- Second handwheel brake

Item No.

CUT 5062 100 - 240 V, 50/60 Hz 10070001

CUT 5062 100 - 240 V, 50/60 Hz (only usable in combination with Aquatec system, **without** blade holder; with universal cassette clamp) 10070010

new

Standard components

Specimen orientation

Universal cassette clamp, orientable
(alternatively: standard specimen clamp, orientable)

Disposable blade holder
(alternatively: standard knife holder)

Section waste tray

Disposable blades, low profile (1 box, 50 pcs.)

Dust cover

Mains cable

Manual

Specifications

Section thickness range 0.5 - 100 μm

0.5 - 2 μm in 0.5- μm -steps
2 - 20 μm in 1- μm -steps
Section thickness settings 20 - 50 μm in 2- μm -steps
50 - 100 μm in 5- μm -steps

Trim thickness range 5 - 750 μm

5 - 20 μm in 1- μm -steps
20 - 50 μm in 2- μm -steps
50 - 150 μm in 5- μm -steps
Trim thickness settings 150 - 750 μm in 10- μm -steps

Horizontal advance 28 mm

Feed speed SLOW 75 / 150 / 300 / 600 $\mu\text{m}/\text{s}$

Feed speed FAST 3,000 $\mu\text{m}/\text{s}$

Vertical stroke 72 mm

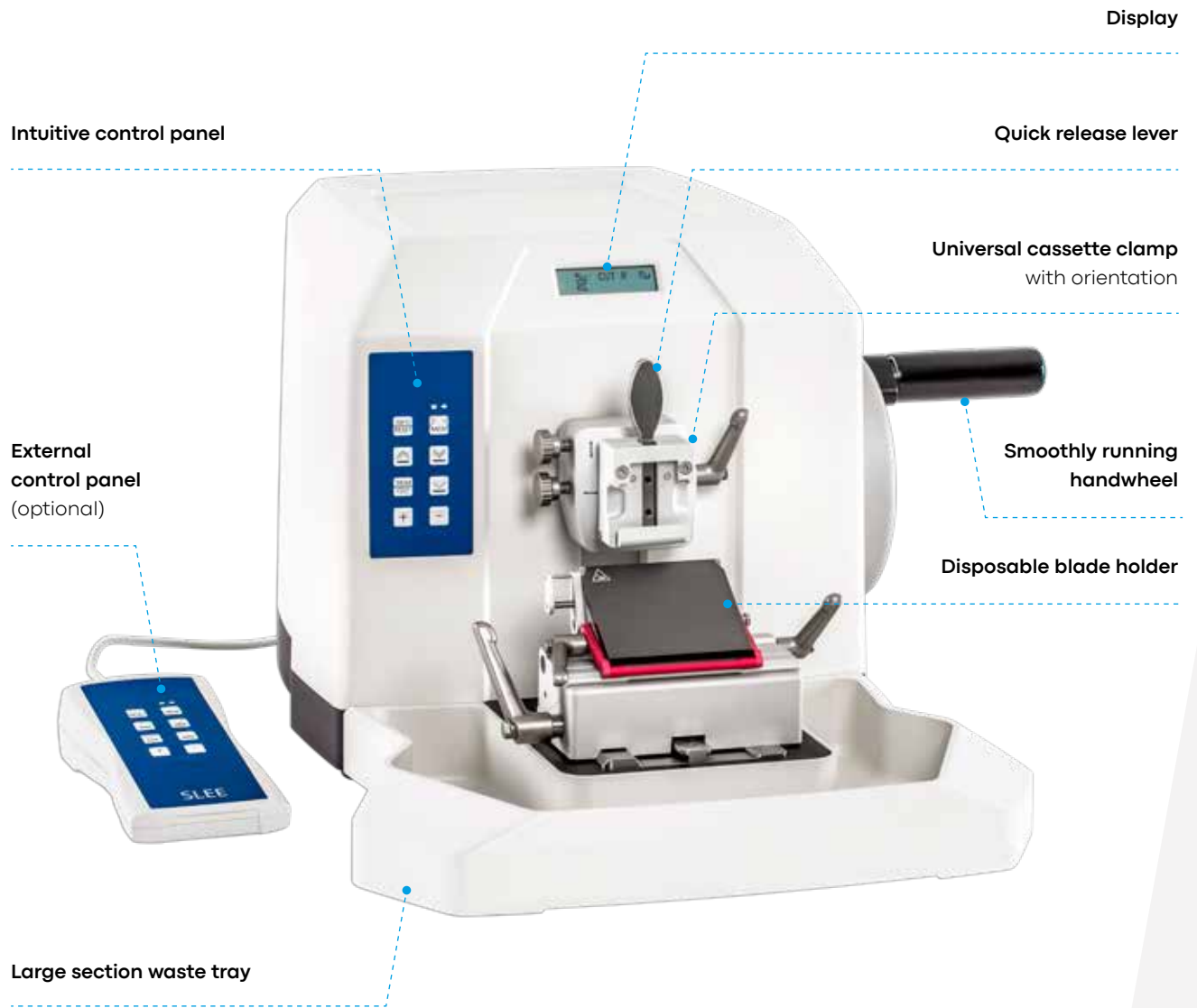
Specimen retraction 0 - 200 μm , selectable

Specimen orientation x/y axis $\pm 8^\circ$, rotation 360°

Electrical parameters 100 - 240 V, 50/60 Hz

Dimensions (w x d x h) 520 x 600 x 325 mm

Weight 33 kg



Optional accessories	Item No.
Aquatec system	10090056
MTR bench top quick freezing unit	10110000
Magnifier with illumination (dimmable)	10090060
2nd lock handweel	10090024
External control panel CUT 5062	10090050
TC65 disposable blade holder (for tungsten carbide blades)	10090041
Tungsten carbide blade (1 pcs.)	28406000
Disposable blades (cf. consumables)	
Brush set (7 pcs., size 2 - 16)	30001031
Glass knife holder (for triangle glass knives)	10090014
Segment arc incl. universal sample holder (for glass knife holder application)	10090015

new

Optional accessories	Item No.
Super Mega cassette clamp, orientable	10090027
Super Mega cassette clamp, fixed	10090021
Standard specimen clamp, orientable	10090006
Standard specimen clamp, fixed	10090007
Foil clamp (use in standard specimen clamp)	10090025
Standard knife holder (top part), incl. knife holder basis	10090008
Prism (set)	10090017
Round specimen holders (different diameters)	on demand
More on request	

Intuitive use



Having a variety of features sometimes ends up in difficult usage, but not with the CUT 5062: The device can be easily controlled via the intuitive control panel.

All in sight



All settings can be easily seen and monitored in the LCD display being in height of the eyes of the user at the front side of the CUT 5062.

CUT 6062 Fully-automatic precision microtome

The Slee fully-automatic precision microtome **CUT 6062** is designed for all applications in routine, research or industry. Years of experience and customer input have contributed to create one of the best fully-automatic microtomes available. The **CUT 6062** combines highest precision with user friendliness as well as best comfort. The motorized sectioning combined with innovative features and accessories make the **CUT 6062** unique. Like all Slee microtomes, the **CUT 6062** comes with a complete set of standard components which can be individually adapted to customer's needs, ready to be used out of the box.



Highlights

- Ergonomic design
- Spacious, integrated section waste tray
- Wide range of accessories
- Intuitive control panel
- Handwheel lock in any position
- Blade holder levers changeable (for left-handed users)
- Highly efficient motorized sectioning (section window / variably adjustable cutting speeds)
- 7 different operation modes (motorized: continuous, program, single step, step, window / manual: standard and rocking mode)
- Motorized trimming up to 750 μm , programmable
- Motorized advance / return of specimen (2 speeds)
- Display of section counter, section sum and remaining travel
- Tip function for precise specimen approach
- 2 specimen feed memory positions
- Variable retraction
- External control panel
- Second handwheel brake

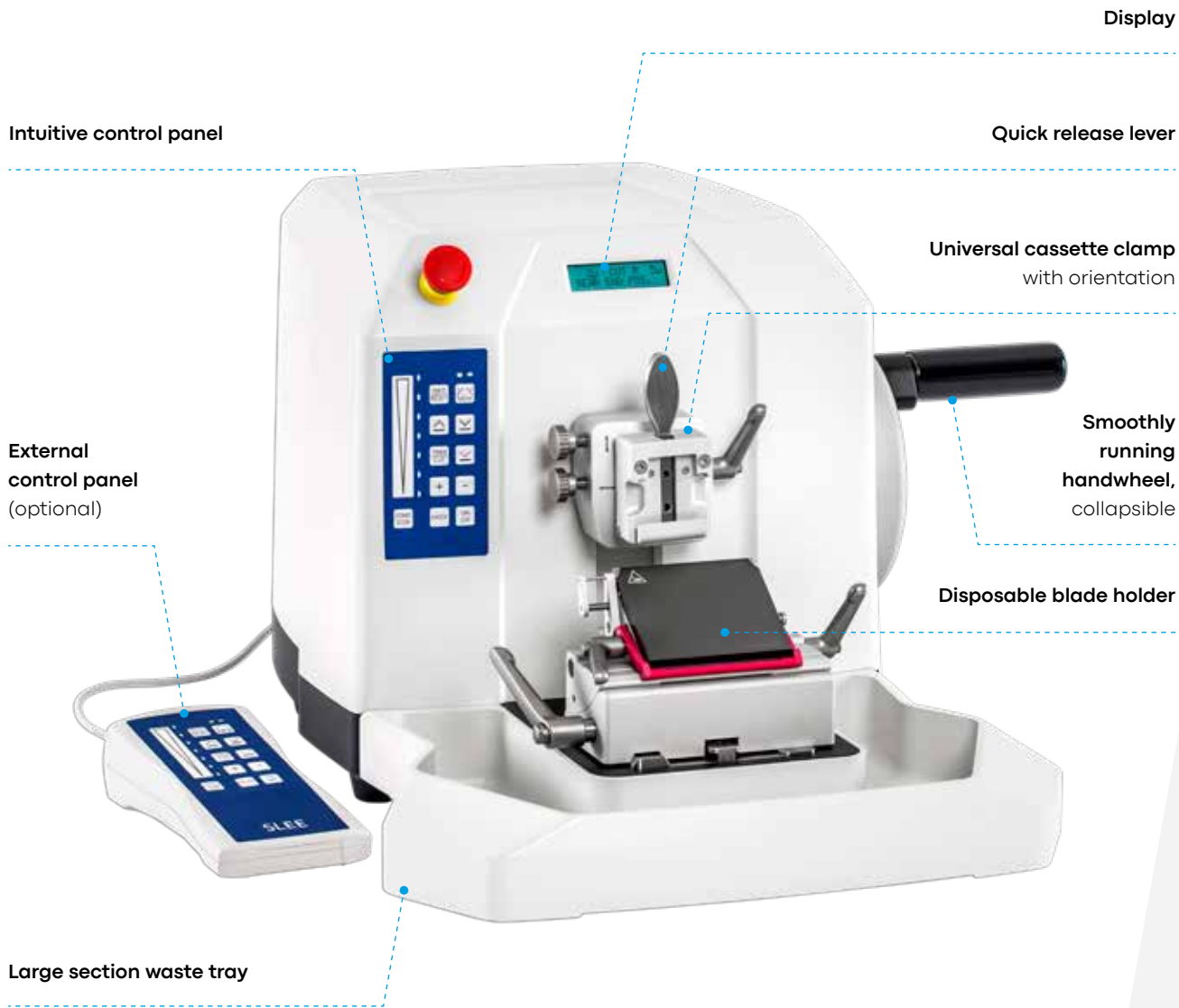
Item No.**CUT 6062 100 - 240 V, 50/60 Hz** 10080001**CUT 6062 100 - 240 V, 50/60 Hz** (only usable in combination with Aquatec system, **without** blade holder; with universal cassette clamp) 10080010**new**

Standard components

Specimen orientation**Universal cassette clamp**, orientable
(alternatively: standard specimen clamp, orientable)**Disposable blade holder**
(alternatively: standard knife holder)**Section waste tray****Disposable blades**, low profile (1 box, 50 pcs.)**Foot switch** for motor drive**Dust cover****Mains cable****Manual**

Specifications

Section thickness range 0.5 - 100 µm**Section thickness settings**
0.5 - 2 µm in 0.5-µm-steps
2 - 20 µm in 1-µm-steps
20 - 50 µm in 2-µm-steps
50 - 100 µm in 5-µm-steps**Trim thickness range** 5 - 750 µm**Trim thickness settings**
5 - 20 µm in 1-µm-steps
20 - 50 µm in 2-µm-steps
50 - 150 µm in 5-µm-steps
150 - 750 µm in 10-µm-steps**Horizontal advance** 28 mm**Feed speed SLOW** 75 / 150 / 300 / 600 µm/s**Feed speed FAST** normal 3,000 µm/s**Vertical stroke** 72 mm**Cutting speed** up to 450 mm/s**Specimen retraction** 0 - 200 µm, selectable**Specimen orientation** x/y axis ± 8°, rotation 360°**Electrical parameters** 100 - 240 V, 50/60 Hz**Dimensions** (w x d x h) 520 x 600 x 325 mm**Weight** 34 kg



Collapsible handle



The handle of the handwheel of the CUT 6062 can be folded in to increase safety when the cutting motor is in operation.

Comfort



For enjoying highest comfort when using CUT 6062, the device is delivered with a foot switch as a standard accessory.

Optional accessories	Item No.
Aquatec system	10090056
MTR bench top quick freezing unit	10110000
Magnifier with illumination (dimmmable)	10090060
2nd lock handweel	10090024
External control panel CUT 6062	10090051
TC65 disposable blade holder (for tungsten carbide blades)	10090041
Tungsten carbide blade (1 pcs.)	28406000
Disposable blades (cf. consumables)	
Brush set (7 pcs., size 2 - 16)	30001031
Glass knife holder (for triangle glass knives)	10090014
Segment arc incl. universal sample holder (for glass knife holder application)	10090015

new

Optional accessories	Item No.
Super Mega cassette clamp, orientable	10090027
Super Mega cassette clamp with clamping lever and level, orientable	10090070
Super Mega cassette clamp, fixed	10090021
Standard specimen clamp, orientable	10090006
Standard specimen clamp, fixed	10090007
Foil clamp (use in standard specimen clamp)	10090025
Standard knife holder (top part), incl. knife holder basis	10090008
Prism (set)	10090017
Round specimen holders (different diameters)	on demand
More on request	

Intuitive use



Having a variety of features sometimes ends up in difficult usage, but not with the CUT 6062: The device can be easily controlled via the intuitive control panel.

All in sight



All settings can be easily seen and monitored in the LCD display being in height of the eyes of the user at the front side of the CUT 6062.

Beyond standard application

The high precision microtomes of the **CUT** series are the basis for almost all applications where high-quality sectioning is requested. Together with add-on equipment such as the **MTR** bench top quick-freezing unit or the **Aquatec** system the **CUT** microtomes are ready for any kind of high performance cutting in the field of medical and industrial applications.

Precise orientation



The specimen orientation on the x and y axis enables fast alignment of the specimens in the desired position.

Flexible



Full flexibility due to the disposable blade holder or standard knife holder and the multiple clamps for any kind of specimen. The clamping levers and blade ejector are changeable (from left to right).

Easy to clean



The design of the CUT microtomes supports the simplest and easiest cleaning possible.

Section waste tray



The large waste tray fits perfectly to the base plate of the microtome and collects the waste during sectioning. Disposal of cutting waste is easy and fast.



Perfect fit

The best microtome is nothing without the perfect blade. We offer premium quality high and low profile plasma blades as well as tungsten carbide blades and PTFE coated disposable blades.



Best sight

To make even small biopsy samples visible, CUT microtomes can be equipped with a magnifier with dimmable illumination (optional).



Safety

The easy to operate handwheel can be locked in any position. This ensures user's safety as well as protection for the sample. The blade holder features a finger protection system for increased safety.



Organized

All tools needed for sectioning can be placed on the special area on top of the microtome housing. This allows fast and fatigue-free working.



Ergonomics

All CUT microtomes have been created with the user in mind - ergonomics are just as important as the quality of the section. Fits perfectly on ergotec series workstations.

Aquatec Transfer system for microtomes of CUT series

The **Aquatec** system provides the solution to the daily challenges of cutting demanding paraffin sections. Already during the cutting process, the section is stretched due to the laminar water film. The volume flow of the water film can be adjusted at any time according to the cutting requirements.

When the transfer bridge is open, the cutting waste is guided straight into the waste container and condenses there. This massively reduces the volume. Frequent emptying of the cutting waste container is no longer necessary. With the bridge closed, the selected section slides gently directly into the temperature-controlled water bath.

In the illuminated water bath the section can be evaluated and selected. The high-quality sections can now be easily handled in the accustomed manner. All settings are carried out via the touch display on the front.



Highlights

- Adjustable laminar water flow for perfect section stretching
- Significant reduction in the volume of section waste
- Easily removable waste tray
- Simplified cutting and simple creation of section ribbons
- Underwater light, flexible positioning
- Intuitive control via touchscreen
- Display with lock function to prevent unintended changes of device settings
- Integrated blade ejector

Item No.

Aquatec 100 - 240 V, 50/60 Hz 10090056

Aquatec 100 - 240 V, 50/60 Hz for MICROM /
ThermoFisher / EpreDia - **generation 1**,
with one-piece base plate only 10090061

Aquatec 100 - 240 V, 50/60 Hz for MICROM /
ThermoFisher / EpreDia - **generation 2**,
with two cheeks blade holder mount only 10090062

new

new



Setting up the device



Taking the sample

Specifications

Water bath temperature	up to 50 °C
Water bath volume	750 ml
Pump reservoir volume	570 ml
Flow rate	0 - 500 ml/min
Dimensions (w x d x h) microtome of CUT series incl. basic device Aquatec, mounted	520 x 705 x 325 mm

Specifications

Dimensions (w x d x h) w/o transfer bridge, knife holder basic device mounted on microtome	300 x 235 x 128 mm
basic device not mounted on microtome	300 x 280 x 128 mm
Electrical parameters	100 - 240 V, 50/60 Hz
Weight basic device w/o transfer bridge, knife holder, incl. lid	5.0 kg
knife holder AQ	2.4 kg

CUT

External control panel

The external control panel allows the user to control the device from the left or right side of the unit. The greater distance is an additional protection from blades and moving parts.

Item No.

External control panel CUT 5062

10090050

External control panel CUT 6062

10090051



Highlights

- Free positioning due to long supply cable with 1.8 m length (suitable for right- and left-handers)
- Reaching over the blade is avoided
- Same user interface of device and control panel
- Secure stand due to rubber feet, no slipping
- User-friendly shape

Magnifier with illumination

When miniature samples have to be processed precisely, attention to detail is crucial. The illuminated magnifier mounted directly on the microtome basis is the perfect accessory to meet these requirements.

Item No.

Magnifier with illumination
100 - 240 V, 50/60 Hz

10090060



Highlights

- Rotatable and adjustable through flexible metal tube
- Lens (Ø 72 mm, diopter: 6)
- Light source: 63 x light-emitting diode (LED), neutral white
- Dimmer (touch function)

MTR

Bench top quick-freezing unit

The **MTR** quick-freezing unit consists of a compressor cooling system with a 2 m flexible isolation tube and a cooling block which can be adapted to a standard specimen clamp of different types of microtomes.



Highlights

- Low operating noise
- Self optimizing controller for temperature accuracy
- Manual defrost
- High cooling capacity down to -45°C

Specifications

		Item No.
Cooling capacity	down to -45 °C	MTR 230 V, 50/60 Hz for CUT series 10110000
Standard cooling head		MTR 230 V, 50/60 Hz for Cuttec S 10110001
Dimensions (w x d x h)	410 x 485 x 310 mm	MTR 115 V, 60 Hz for CUT series 10110002
Weight	28 kg	MTR 115 V, 60 Hz for Cuttec S 10110003

Slee
Fresh
Design.
New
Ideas.

Microtome Cuttec S

*Manual sliding microtome with precise mechanics
and flexible specimen orientation*



Cuttec S

Manual sliding microtome

The manual sliding microtome **Cuttec S** is designed for all applications in routine, research or industry, always focusing on the needs of the user. The precise mechanisms together with the smooth operation are contributing to best quality sections every day. Features like the specimen orientation are included as standard components.

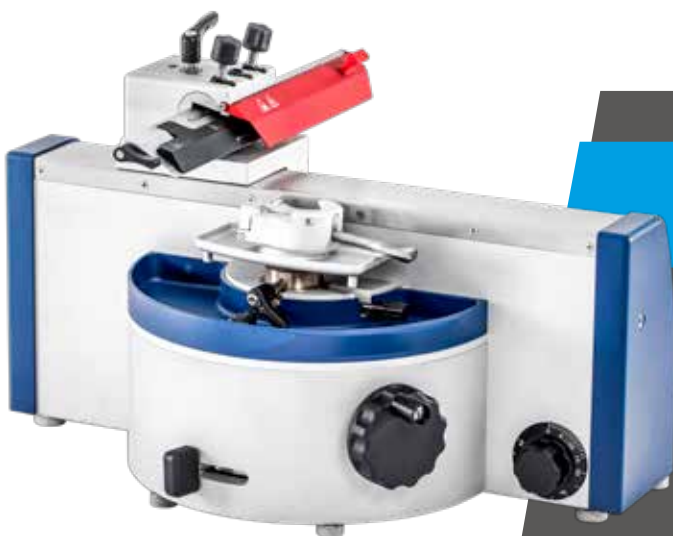
Specifications

Section thickness range	0 - 60 µm
Section thickness settings	0 - 15 µm in 1-µm-steps 15 - 60 µm in 5-µm-steps
Automatic feed	0 - 60 µm
Specimen feed	30 mm
Maximum specimen size	50 x 70 x 20 mm
Specimen orientation	x/y axis ± 8°
Length of cutting way	180 mm
Dimensions (w x d x h)	150 x 450 x 200 mm
Weight w/o accessories	18 kg

Item No.

Cuttec S

10040001

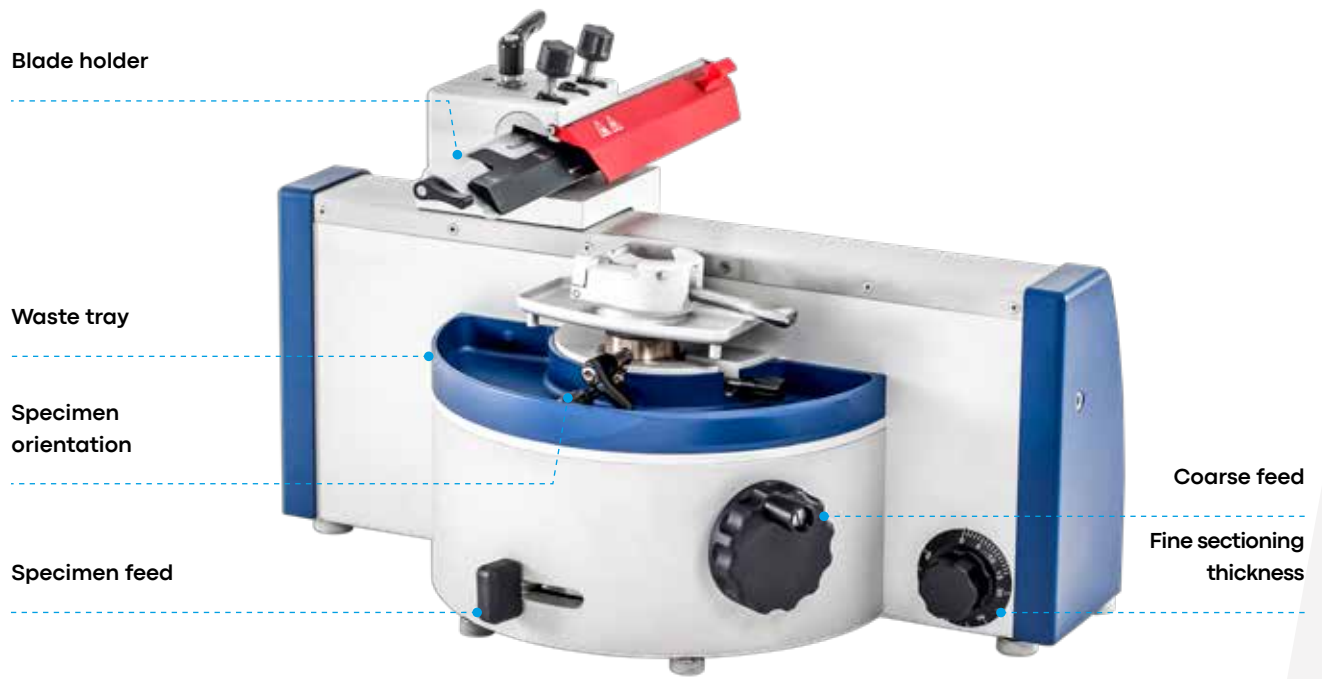


Highlights

- High quality sections
- Safety features to protect user and specimen
- Ergonomic design for fatigue-free working
- Precise specimen orientation
- Complete set of accessories
- Waste tray included

Safe and easy operation

Keeping the safety of the user and specimen in mind, e.g. by the locking mechanism or the finger protection system



Specimen orientation



Specimen orientation on the x and y axis allows quick alignment of the specimen to the desired position.

Finger protection



Manipulations with the inserted knife are risky. To prevent injuries, the red finger guard offers protection.

Waste tray



The waste tray included in the standard equipment perfectly fits to the housing and collects the cutting waste. Emptying is fast and easy.

Easy Operation



Operation is simple and all settings are within reach of the user. E.g. you can find the cutting thickness selection on the front side of the device. Simply set the number on the wheel.

Safety



Since the sledge of the Cuttec S is very smooth-running, it is important to brake it easily. This is achieved by the very easily accessible brake.

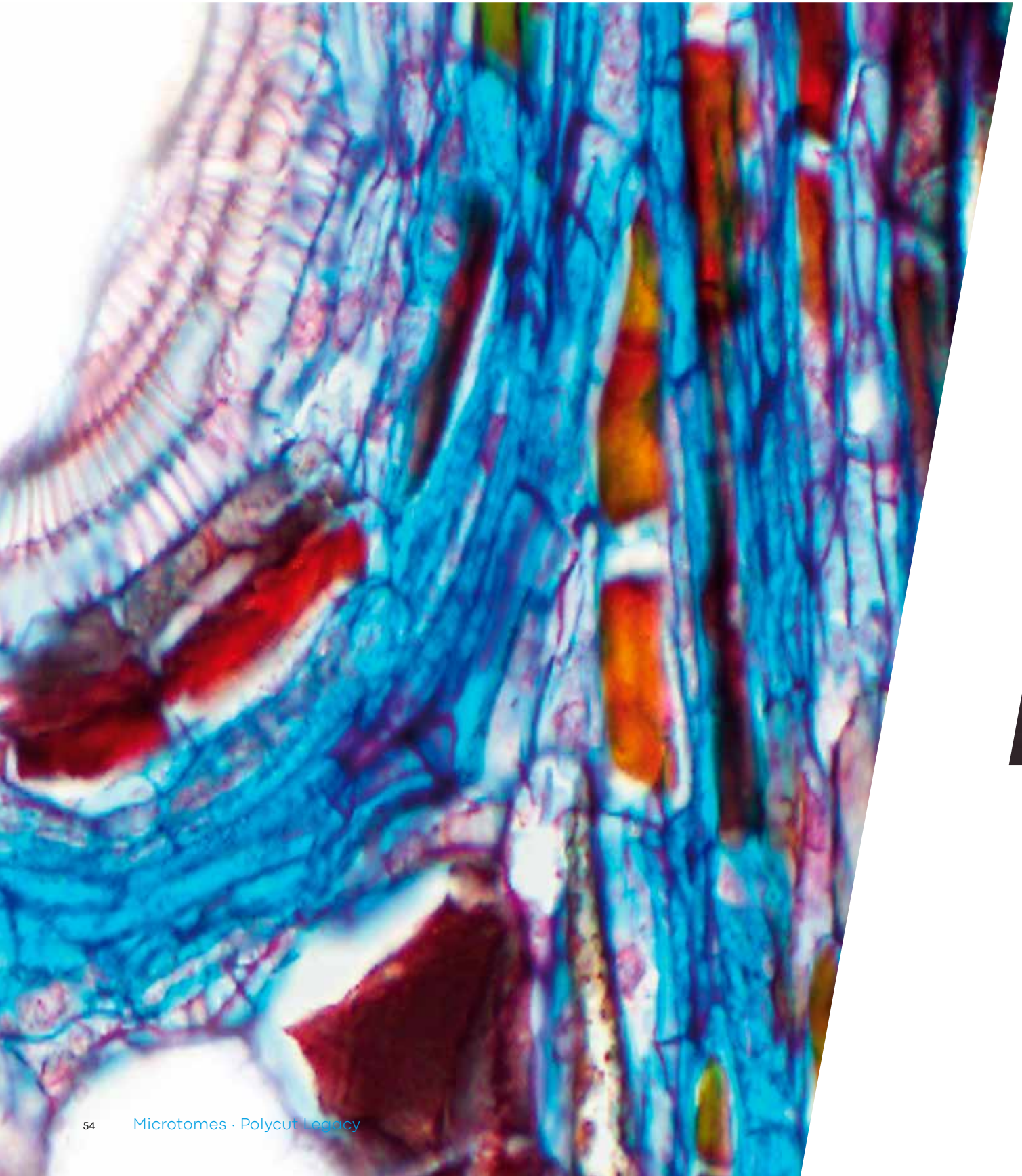
Perfect fit



The best microtome is nothing without the perfect blade. Slee offers both low and high profile blades that perfectly fit the Cuttec S.

Polycut Legacy

The Gold standard in microtomy for histology life sciences and material sciences is redefined!





**new
product**

Polycut Legacy

Heavy duty microtome

Control unit

LN2 liquid nitrogen

Polycut Legacy

Heavy duty microtome

Made of metal.

Made for eternity.

Made in Germany.



Polycut Legacy

Highlights

- High section thickness range
- Huge specimen size
- 4 motorized sectioning modes
- Control panel
- Control unit
- Foot switch
- Second screen
- Professional photo-position

Item No.

Polycut Legacy, 50/60 Hz

upon request

new

Specifications microtome

Section thickness range	0 - 1,000 μm , adjustable in 1- μm -steps
Total horizontal specimen stroke	max. 275 mm
Total vertical knife feed	max. 70 mm
Knife retraction (during specimen return stroke)	0 - 1,000 μm , adjustable
Clearance angle adjustment	0° - 17°
Knife declination (with optional knifeholder)	45°
Maximum specimen size (w x d x h)	250 x 200 x 70 mm
Specimen orientation (along x/y axis)	5°
Specimen orientation (rotation)	approx. +/- 3 and 90°
Sectioning speed	1 - 125 mm/s, adjustable in 1-mm-steps
Return speed	1 - 125 mm/s, adjustable in 1-mm-steps
Manual knife movement (slow / fast)	37 mm/s and 74 mm/s
Manual specimen movement (slow / fast)	37 mm/s and 74 mm/s

Specifications microtome

Four motorized sectioning modes	Single, Continuous, Interval and Multi (selectable either to be used via the control panel or the foot switch)
--	--

Electrical connections

Nominal voltage	110 - 240 V
Nominal frequency	50 Hz - 60 Hz
Ampacity	4 A at 230 - 240 V / 10 A at 100 - 120 V
Maximum power draw	max. 900 VA
Protective class	I
Overvoltage category	II

Dimensions and weights

Microtome (w x d x h)	380 x 815 x 380 mm
Control unit (w x d x h)	340 x 290 x 180 mm
Required space for operating the machine	1,000 x 950 mm
Microtome	approx. 80 kg
Control panel	approx. 10 kg

Technical specifications subject to change.

Overview

Knife holders, clamps & paraffin tables

Knife holders

Knife holder KH-P

for parallel-sided full tungsten carbide knives



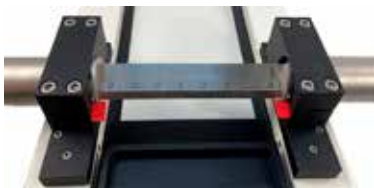
Knife holder KH-P 45

with declination blocks for long pulling cuts at 45° to section even the hardest materials



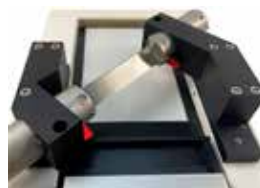
Knife holder KH-S

for all standard knives or like seen in this picture with our insert D-I for all disposable low profile blades up to 22 cm width



Knife holder KH-S 45

for all standard knives with 45° declination blocks for more tricky paraffin sections



***A wide range of equipment
supports you in the application.***

Clamps & paraffin tables

Basic clamp with vise

for specimen up to 80 x 100 mm, with top jaws for high specimen

- equipped with V-inserts for round specimen for different diameters
- it is the base to clamp all paraffin tables
- lateral movement to benefit from the whole width of the knife
- x/y-orientation in every direction



Object clamp

for specimen up to 44 x 58 mm

- lateral movement to benefit from the whole width of the knife
- x/y-orientation in every direction



Round clamp

with inserts for 6, 15 and 25 mm



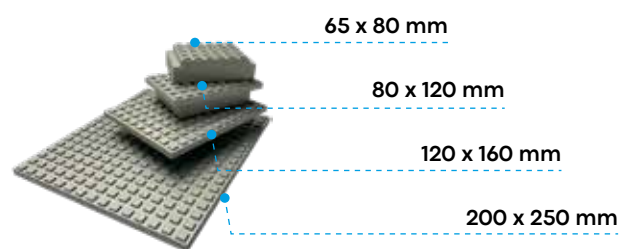
Insert D-TC

for the Knife holder KH-P to clamp disposable tungsten carbide knives up to a width of 8 cm



Paraffin tables

65 x 80 mm, 80 x 120 mm, 120 x 160 mm, 200 x 250 mm



Control unit

Everything at a glance on the control unit.



Fast alignment of the specimen to the knife with the dedicated touch screen for knife / sledge movements

Everything at a glance on the second screen

Highlights

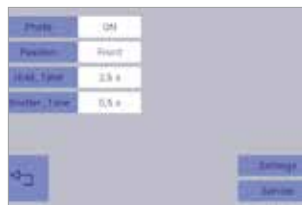
- Everything at a glance on the control unit
- Illuminated buttons for Start, Pause and Stop that symbolize the actual state in the sectioning process
- Dedicated turnbutton for the sectioning feed for a quick change of values
- Dedicated turnbutton to change the sectioning speed
- Big emergency-stop button

Second screen



- Sectioning window
- Stop-position as selected
- Sectioning feed
- Retraction feed
- Cutting speed
- Return speed
- Sectioning modes: Single, Continuous, Interval or Multi Cuts (with a preselected amount of sections)

Professional photo-position



Acquire microscope pictures or surface photographs of oversectioned specimen by mounting some optional equipment on top. Plug-in a 6.3 mm jackplug and control it through the software.

Optional foot switch



Foot switch with integrated emergency-stop function.

Safety features



Big emergency-stop button for your safety.

Illuminated buttons



Start, Pause and Stop symbolize the actual state in the sectioning process.

LN2

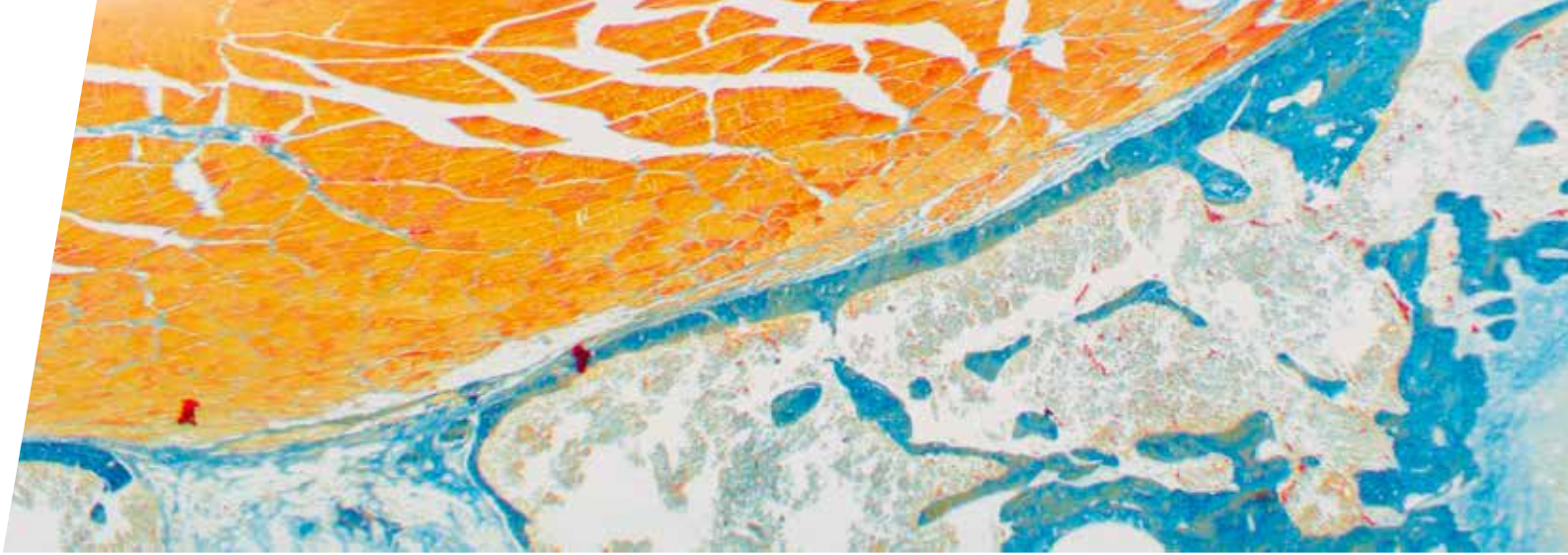
liquid nitrogen

Customized solutions: Paraffin tables can be turned into cryostages so fresh biological native specimen can be sectioned at ambient temperature. Each of our clamps can be turned into cryostages so e.g. foam or leather can be sectioned right at their glasspoint.



Highlights

- Automatic advanced programmable LN2 microdosing system with PC controlled software
- Pressure-less flowing LN2, without spilling, noise, vibrations etc.
- 35 l dewar included
- Microdosing pump with flow-control from some drops up to 1 l/min
- All connectors and cables included
- Your customized cryostage



Knives & resharpening service

Carbide knives

Full tungsten carbide knives parallel 16 cm 40° or 50°.
Full tungsten carbide knives rotary 16 cm, D-edge or C-edge.



Standard knives

Standard knives from surgery steel 16, 22 and 30 cm, D-edge or C-edge.



Disposable blades

Disposable tungsten carbide blades TC65 with 65 mm width (5 pcs. per box).



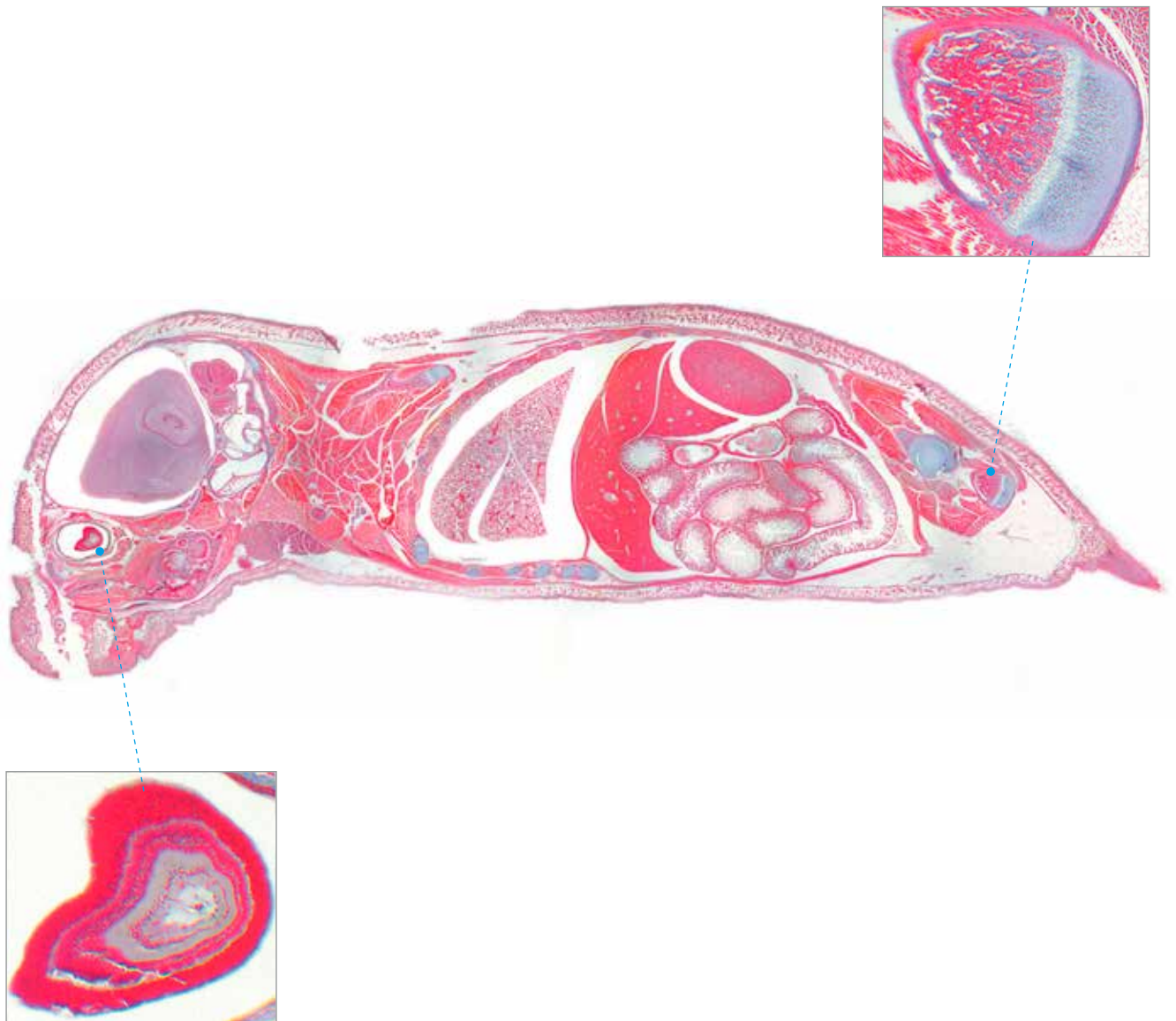
For more information please feel free to contact us directly.

The whole thing is of interest ...

But the details should stay in focus!

250 mm

Whole body section of a mouse from a paraffin block:
Multi acquisition picture from a microscope slidescan.
Specimen up to **200 x 250 x 70 mm**.



Sections of complete organs

E.g. whole brains, eye bulbs etc.

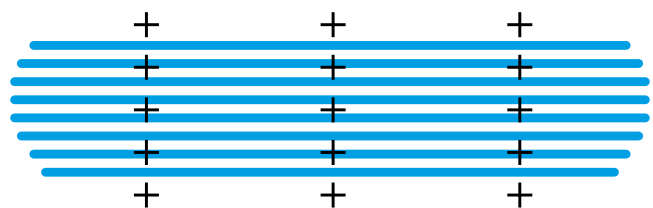
Whole brain section from a paraffin block for a later 3D stacking of microscope pictures for an organ reconstruction.



Cross section a of complete eye bulb microscope picture from a slidescan of multi acquisition positions.



3D reconstruction of whole organs with any number of serial sections.



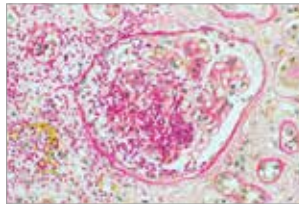
200 mm

Tissues

Biological specimens

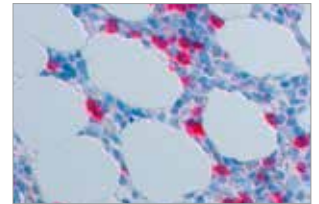
When **oversized or even hard tissues** should be sectioned in one piece from paraffin, methyl-methacrylate or native like wood or bones with perfect sectioning results, it is time for the "Polycut Legacy"!

Human kidney



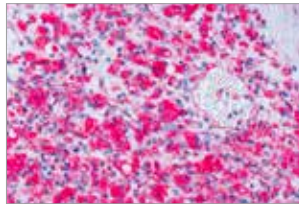
Whole organ section from a paraffin block, stained Tri-PAS.

Human iliac crest



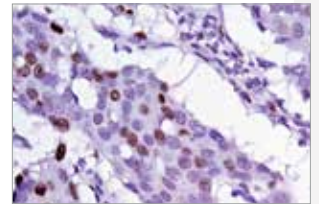
Section from an iliac crest embedded in MMA, stained CD79a.

Human kidney



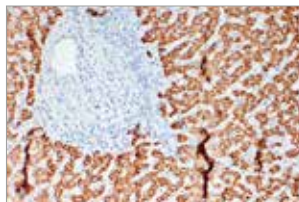
Whole organ section from a paraffin block for cancer research, stained Vimentin.

Human mamma



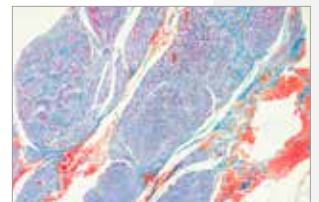
Whole organ section from a paraffin block for cancer research, stained Ki67.

Human liver



Whole organ section from a paraffin block for cancer research, stained HBVsAG.

Human prostate gland



Section from a whole human prostate gland in one paraffin block. While complete organ sections are primarily interesting in research, so even in routine diagnostics they can play an important role as you need to process less cassettes, have less sections and a quicker diagnosis.

Tissues

Tricky and hard

When **undersized microtomes are far beyond their limits**, your research, your analysis and your target and goal is yet far away from being reached, then it is time for the next dimension of microtome, the "Polycut Legacy"!

Wood



Native section of an adult grapevine wood with a declinated section angle of 45°.

Bone



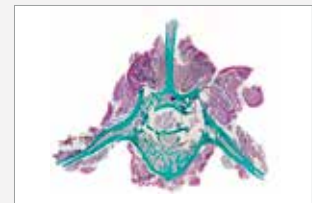
Bone section from a methyl-methacrylat embedded block stained Movat Pentachrom.*

Thigh bone



Complete in paraffin embedded femur, thigh bone, sectioned and stained Alcian Blue for slidescan of multiple microscope pictures.*

Vertebrae



Section through a complete vertebrae bone with muscles, stained Masson Goldner from a methyl-methacrylat embedding, microscopic slidescan from multiple pictures.*

Tooth



Whole longitudinally tooth section in a Goldner Anilin-blue stain for a microscopic slidescan of the whole section.*

Implants



Cross section of a shinbone (tibia lat.) with implants in it, in a Goldner stain for a scan of the whole section area under the microscope - of course the implants moved out of the block within the section, but the 4 µm section was perfect.*

**With friendly help by the University Centre of Orthopaedics & Trauma Surgery of the University Hospital Carl Gustav Carus at the Technical University Dresden, Germany. Thanks to Suzanne Manthey.*

Tissues

Material sciences

Every industrially manufactured component differs, as it comes from countless materials and substances forged together to one new thing. We know best that your are not sectioning paraffin like in hospitals! You need a microtome with **much more capacity, more power, more flexibility and especially more volume** for your very demanding preparations when other instruments are simply limited. Your solution has a name: "Polycut Legacy"

Undersea cable



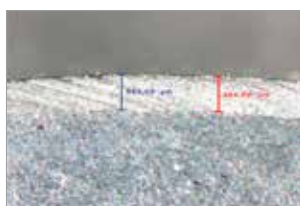
Cross section of an undersea cable with a diameter of 8 cm (different metals & polymers combination) for inspection in a bright field microscope.

Aerospace



Oversectioned aerospace metal component to control the grain size distribution in the grid network.

Metal or plastic parts



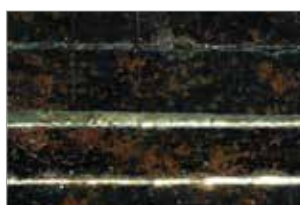
Cross section through a two component material. Here two metals are merged together to form one piece. Coating thickness seems to vary in the production process as the measurements differ so it evidences insufficient quality tolerances.

Tubes



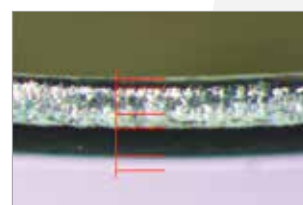
Cross section through a tube which contains a metallic body and a plastic coating. The bonding quality of the synthetic coating is of interest by measuring the layer thickness.

Automotive



Corrosion analytics and weld seam testing on an automotive component with multiple pressed layers.

Coating layers



Coating layer measurements from a component put into MMA for sectioning. Microscopic picture from quality control process to validate production requirements.



Power cable

Oversection of a 7 cm in diameter (\varnothing) copper/plastic composite cable with V-inserts clamped to investigate the surface.



Gears

Cross section through a gear made from polyoxymethylen.



Power cable

Cross section of the above power cable with 250 μm when the copper leaves the composite while sectioning, but now one can investigate the pigment distribution in the now transparent plastic.



Carbon fibres

Cross section through a polyphenylenesulfide component with a high percentage of carbon fibres.



Glass fibres

Cross section of a polyamide component with a high percentage of glass fibres.

Cryostats

The Slee cryostats stand for reliability, precision, safety and convenience for a wide range of applications in histopathology as well as in industry for quality control and materials research. Since the development of the world's first cryostat, Slee stands for the highest quality medical devices and products. The devices offer best ergonomic features and efficiency. The **MEV** and **MNT** series are equipped with a spacious cooling chamber, have intuitive controls and an automatic defrost function. The heart of all devices is the precision rotary microtome in proven Slee quality. A wide range of optional accessories allows adaptation to individual requirements.





MEV / MEV +

Routine cryostat

MNT

High-end cryostat

Overview cryostats



MEV / MEV + Routine cryostat

Exchangeable standard knife
or disposable blade holder

Specimen orientation

Low temperature storage area
for up to 24 object holders

Power saving mode

Electronic advance of step motor

Selectable electronic retraction

Options

2 quick freezing positions

UV-C disinfection

Object cooling (-50 °C)

Debris extraction system

MEV +: product based on MEV platform including the following options:
UV-C disinfection, 2 quick freezing positions and object cooling

Specifications

Cutting thickness 0.5 - 100 µm

Trimming thickness 0.5 - 750 µm

Horizontal advance 28 mm

Vertical stroke 58 mm

Specimen orientation x/y axis 8°, rotation 360°

Specimen holders 22 and 35 mm Ø, with grip protection

Cryochamber temperature 0 °C down to -35 °C

Object head temperature 0 °C down to -50 °C
Freezing shelf 10 °C less than chamber
temperature setting

MEV 680 x 760 x 1,110 mm (w x d x h)

MEV 127 kg, MEV + 154 kg



MNT

High-end cryostat

Exchangeable standard knife
or disposable blade holder

Variable cutting motor speed

Specimen orientation

Low temperature storage area
for up to 24 object holders

Power saving mode

Electronic advance of step motor

Selectable electronic retraction

Options

2 quick freezing positions

UV-C disinfection

Object cooling (-50 °C)

Debris extraction system

Spezifikationen

Cutting thickness 0.5 - 100 µm

Trimming thickness 0.5 - 750 µm

Horizontal advance 28 mm

Vertical stroke 58 mm

Variable cutting speed 3 - 300 mm/s

Specimen orientation x/y axis 8°, rotation 360°

Specimen holders 22 and 35 mm Ø, with grip protection

Cryochamber temperature 0 °C down to -35 °C

Object head temperature 0 °C down to -50 °C
Freezing shelf 10 °C less than chamber temperature
setting

MEV +, MNT 750 x 760 x 1,110 mm (w x d x h)

154 kg

MEV/ MEV +

Routine cryostat

The model **MEV** features convenient operation and a modern rotary microtome. The space-saving design has a large stainless steel cryo-chamber, an effective freezing bar with 24 positions and a cryochamber cooling temperature down to -35°C .

Many years of experience in this market and regular feedback from customers enable us to provide the **MEV +** cryostat, covering the most common requirements most frequently needed in routine histology. The device is equipped with UV-C surface disinfection, 2 quick freezing positions and object cooling.



Highlights

- Modern rotary microtome with high-precision automatic feed
- Integrated section counter
- Large anti-roll plate
- Intuitive control
- Automatic defrost
- 24 freezing positions
- Debris extraction system
- 2 quick freezing positions
- UV-C disinfection
- Object cooling

	Item No.
MEV 230 V, 50/60 Hz	10150000
MEV 115 V, 60 Hz	10153000

	Item No.
MEV + 230 V, 50/60 Hz	10150700
MEV + 115 V, 60 Hz	10150701

MEV + including: UV-C disinfection, 2 quick freezing positions and object cooling

Standard components

Anti-roll plate, glas (2 pcs.)

Specimen holders (5 x Ø 22 mm; 5 x Ø 35 mm)

Section counter

Disposable blade holder
(alternatively: standard knife holder)

Heat extractor (1 pcs.)

Rack for specimen holders (stainless steel)

Disposable blades (box with 50 pcs.)

CryoGlue embedding medium (125 ml)

Cryostat low temperature oil (50 ml)

Set of Allen keys

Clear-cut brush

Mains cable

Manual

Specifications

Cryochamber temperature 0 °C down to -35 °C

Section thickness range 0.5 - 100 µm

0.5 - 2 µm in 0.5-µm-steps
2 - 20 µm in 1-µm-steps
Section thickness settings 20 - 50 µm in 2-µm-steps
50 - 100 µm in 5-µm-steps

Trim thickness range 0.5 - 750 µm

0.5 - 2 µm in 0.5-µm-steps
2 - 20 µm in 1-µm-steps
20 - 50 µm in 2-µm-steps
Trim thickness settings 50 - 150 µm in 5-µm-steps
150 - 750 µm in 10-µm-steps

Horizontal advance 28 mm

Vertical stroke 58 mm

Specimen retraction 0 - 200 µm, selectable

Specimen orientation, horizontal x/y axis ± 8°

Specimen orientation, vertical x/y axis ± 8°

Specimen orientation, rotation 360°

Electrical parameters 115 V, 60 Hz | 230 V, 50/60 Hz

Dimensions (w x d x h)

MEV 680 x 760 x 1.110 mm

MEV + and all devices with object cooling option 750 x 760 x 1.100 mm

Weight w/o accessories 127 kg MEV
154 kg MEV +



MEV stainless steel cryochamber with modern rotary microtome

Options

Item No.

2 quick freezing positions 10159000

UV-C disinfection 230 V, 50/60 Hz 10169000

UV-C disinfection 115 V, 60 Hz 10169001

Object cooling 230 V, 50/60 Hz 10164000

Object cooling 115 V, 60 Hz 10164200

Debris extraction system 230 V, 50/60 Hz 10167000

Debris extraction system 115 V, 60 Hz 10167200

Optional accessories

Item No.

Magnetic blade mover 34004113 **new**

Standard knife holder 10156010

Specimen holder (Ø 22 mm; 5 pcs.) 30000002

Specimen holder (Ø 28 mm; 5 pcs.) 30000017

Specimen holder (Ø 35 mm; 5 pcs.) 30000000

Specimen holder (Ø 50 mm; 5 pcs.) 30000003

Rack for specimen holders (stainless steel) 31000769

Optional accessories

Item No.

Cover for cooling-bar 32000497

Cork plates (Ø 20 mm; 100 pcs.) 30001001

CryoGlue embedding medium (4 x 125 ml) 30001100

Clear-cut brush 30001030

Brush set (7 pcs., size 2 - 16) 30001031 **new**

Anti-roll plate, glas
(40 x 26 x 3 mm) 32203206

Anti-roll plate, glas
(70 x 26 x 3 mm) 32203307

Steel knife (16 cm-C-profile, 1 pcs.) 28000026

Disposable blades (cf. consumables)

Footrest incl. height adjustment (MEV) 10157008

Footrest incl. height adjustment (MEV
with object cooling, MEV + and MNT) 10157009 **new**

Ergosit laboratory chair 10157010

Additional cooling plate (on demand) **new**

* The specimen holders with Ø 22 mm, 28 mm, 35 mm come in 5 different colors for each size. The specimen holders with Ø 50 mm are only available in black.

MNT

High-end cryostat

The **MNT** high-end cryostat is designed for histopathology and research applications. The device is equipped with a fully automatic rotary microtome with extremely high mechanical stability and backlash-free roller guides. Furthermore, the device has a state-of-the-art control system.



Highlights

- Modern rotary microtome with high-precision automatic feed
- Integrated section counter
- Cutting motor with variable speed
- Large anti-roll plate
- Intuitive control
- Automatic defrost
- 24 freezing positions
- Debris extraction system
- 2 quick freezing positions
- UV-C disinfection
- Object cooling

Item No.

MNT 230 V, 50/60 Hz 10160000

MNT 115 V, 60 Hz 10162000

Standard components

Anti-roll plate, glas (2 pcs.)**Specimen holders** (5 x Ø 22 mm; 5 x Ø 35 mm)**Section counter****Disposable blade holder**
(alternatively: standard knife holder)**Heat extractor** (1 pcs.)**Foot switch** for motor drive**Rack for specimen holders** (stainless steel)**Disposable blades** (box with 50 pcs.)**CryoGlue embedding medium** (125 ml)**Cryostat low temperature oil** (50 ml)**Set of Allen keys****Clear-cut brush****Mains cable****Manual**

Specifications

Cryochamber temperature 0 °C down to -35 °C**Section thickness range** 0.5 - 100 µm**Section thickness settings**
0.5 - 2 µm in 0.5-µm-steps
2 - 20 µm in 1-µm-steps
20 - 50 µm in 2-µm-steps
50 - 100 µm in 5-µm-steps**Trim thickness range** 0.5 - 750 µm**Trim thickness settings**
0.5 - 2 µm in 0.5-µm-steps
2 - 20 µm in 1-µm-steps
20 - 50 µm in 2-µm-steps
50 - 150 µm in 5-µm-steps
150 - 750 µm in 10-µm-steps**Horizontal advance** 28 mm**Vertical stroke** 58 mm**Sectioning speed** 3 - 300 mm/s, selectable**Specimen retraction** 0 - 200 µm, selectable**Specimen orientation** x/y axis 8°, rotation 360°**Electrical parameters** 115 V, 60 Hz | 230 V, 50/60 Hz**Dimensions** (w x d x h) 750 x 760 x 1.100 mm**Weight** w/o accessories 154 kg



MNT stainless steel cryochamber with modern rotary microtome and specimen holder

Options

Options	Item No.
2 quick freezing positions	10159000
UV-C disinfection 230 V, 50/60 Hz	10169000
UV-C disinfection 115 V, 60 Hz	10169001
Object cooling 230 V, 50/60 Hz	10164000
Object cooling 115 V, 60 Hz	10164200
Debris extraction system 230 V, 50/60 Hz	10167000
Debris extraction system 115 V, 60 Hz	10167200

Optional accessories

Optional accessories	Item No.
Magnetic blade mover	34004113
Standard knife holder	10156010
Specimen holder (Ø 22 mm; 5 pcs.)*	30000002
Specimen holder (Ø 28 mm; 5 pcs.)*	30000017
Specimen holder (Ø 35 mm; 5 pcs.)*	30000000
Specimen holder (Ø 50 mm; 5 pcs.)*	30000003
Rack for specimen holders (stainless steel)	31000769

Optional accessories

Optional accessories	Item No.
Cover for cooling-bar	32000497
Cork plates (Ø 20 mm; 100 pcs.)	30001001
CryoGlue embedding medium (4 x 125 ml)	30001100
Clear-cut brush	30001030
Brush set (7 pcs., size 2 - 16)	30001031
Anti-roll plate, glas (40 x 26 x 3 mm)	32203206
Anti-roll plate, glas (70 x 26 x 3 mm)	32203307
Steel knife (16 cm-C-profile, 1 pcs.)	28000026
Disposable blades (cf. consumables)	
Footrest incl. height adjustment (MEV with object cooling, MEV + and MNT)	10157009
Ergosit laboratory chair	10157010
Additional cooling plate (on demand)	

new

new

new

new

* The specimen holders with Ø 22 mm, 28 mm, 35 mm come in 5 different colors for each size. The specimen holders with Ø 50 mm are only available in black.

Water baths & slide warmers

Slee offers a reliable and safe solution for every laboratory and all requirements. The devices are available as combination or as a single device.





Slidetec Water / Heat

Water bath & slide warmer

Slidetec Heat

Slide warmer

Slidetec Water

Water bath

Slidetec Water S

Water bath

Overview

Water baths & slide warmers



Slidetec Water / Heat

Water bath & slide warmer

Specifications

Water bath volume	2 l
Capacity slide warmer	30 slides
Temperature range	RT up to 60 °C (water bath) RT up to 80 °C (slide warmer)
Electrical parameters	115 V, 60 Hz 230 V, 50/60 Hz
Consumption	600 W
Dimensions (w x d x h)	370 x 560 x 230 mm
Weight	18 kg

Item No.

Slidetec Water / Heat 230 V, 50/60 Hz	13000500
Slidetec Water / Heat 115 V, 60 Hz	13000501

Slidetec Heat

Slide warmer

Specifications

Capacity slide warmer	30 slides
Temperature range	RT up to 80 °C
Electrical parameters	115 V, 60 Hz 230 V, 50/60 Hz
Consumption	300 W
Dimensions (w x d x h)	350 x 370 x 230 mm
Weight	15 kg

Item No.

Slidetec Heat 230 V, 50/60 Hz	13000510
Slidetec Heat 115 V, 60 Hz	13000511



Slidetec Water

Water bath

Specifications

Water bath volume	2 l
Temperature range	RT up to 60 °C
Electrical parameters	115 V, 60 Hz 230 V, 50/60 Hz
Consumption	300 W
Dimensions (w x d x h)	350 x 370 x 230 mm
Weight	10 kg

Item No.

Slidetec Water 230 V, 50/60 Hz 13000520

Slidetec Water 115 V, 60 Hz 13000521

Optional accessories

Item No.

Lid for Slidetec Water or Water / Heat to cover the glass tray 13000550

Slidetec Water S

Water bath

Specifications

Water bath volume	1.6 l
Temperature range	RT up to 60 °C
Electrical parameters	115 V, 60 Hz 230 V, 50/60 Hz
Consumption	300 W
Dimensions (w x d x h)	280 x 280 x 100 mm
Weight	2 kg

Item No.

Slidetec Water S 230 V, 50/60 Hz 13000530

Slidetec Water S 115 V, 60 Hz 13000531

Optional accessories

Item No.

Lid for Slidetec Water S 13000551

Staining systems

Slee offers three different staining systems for different demands. Each laboratory can be equipped with a suitable staining system according to its individual requirements.





MSM

Carousel slide stainer

Cromatec I / Cromatec II

Flexible staining system
with highest throughput

MAS

Multi protocol stainer

MSM Carousel slide stainer

With its simple user interface and sophisticated technology, the **MSM** carousel stainer is designed to meet the requirements for routine staining in histology and cytology laboratories. The device is equipped with 24 incubation stations containing up to 400 ml. The flex-programming option allows different staining protocols while using the same reagents. An integrated UPS (uninterruptible power supply, with built-in batteries) ensures highest process reliability even in environments with frequent power failures. A reliable extraction system with carbon filter reduces contact with reagent vapors for increased workplace safety. The rotating reagent cuvette table principle allows access to slide baskets and cuvettes from front.



Highlights

- Easy loading and full process control due to rotating table principle
- Integrated UPS system protects your samples
- Flex-programming
- Password protection
- Intuitive control panel
- System status monitor display and status LEDs

Item No.**MSM 100 - 240 V, 50/60 Hz**

12000205

Standard components**Staining cuvettes** (plastic, 24 pcs.)**Transport basket** (plastic, 1 pcs.)
capacity 30 slides**Mains cable****Manual****Specifications****Staining cuvettes**material plastic
dimensions (w x d x h) 130 x 40 x 135 mm
volume 400 ml**Transport basket**material plastic
capacity 30 standard slides**Programming**20 staining programs,
freely programmable**Electrical parameters**

100 - 230 V, 50/60 Hz

Dimensions (w x d x h)

870 x 870 x 750 mm

Weight

w/o accessories 80 kg

Options**Item No.****Hood** for MTP / MSM (Perspex)

11000220

Staining cuvettes

12000260

Slide basket (30 slides)

12000261

Drying station

12000256

Exhaust fan

11000210

Exhaust fan

incl. carbon filter

11000211

Carbon filter

11000254

Cromatec I / II

Stainer with highest throughput

The **Cromatec** series represents maximum productivity and highest economy in routine histology and cytology. It combines consistent staining quality with extraordinary ease of operation of the device. Continuous loading of 30-slide baskets supports the user to fulfil the daily requirements and enables staining with highest throughput.

The Slee Cromatec stainer offers unique flexibility by individually programmable time settings for each station and freely selectable positions for the washing cuvettes. Exhaust fumes are filtered by an integrated carbon filter and may be guided to a central extraction system. The low noise level during operation avoids any disturbance.

Due to the ease of use and high throughput, the stainer is a great fit for any size of a laboratory.

To safeguard the operation of the unit in case of power failures, every device is equipped with an integrated uninterruptible power supply (UPS) as standard.

Highlights

- Highest throughput in routine, e.g. H&E staining
- Individual time settings, station for station, for maximum flexibility
- Continuous loading of 30-slide baskets
- Up to 6 washing cuvettes with controlled fresh water supply
- Reagent management system for maximum and consistent staining quality
- Smart device connectivity for monitoring staining processes, apps for iOS and Android
- Very low operating noise level
- Integrated exhaust fan with carbon filter
- Easy handling via 7" touch display
- Integrated LED illumination of the working area
- Integrated uninterruptible power supply

Item No.

Cromatec I 100 - 240 V, 50/60 Hz 17000000

Cromatec II 100 - 240 V, 50/60 Hz 17000001

Highest flexibility

Cromatec I

High process flexibility

Maximum throughput

Cromatec II

High process flexibility

Maximum throughput

Additional heating station

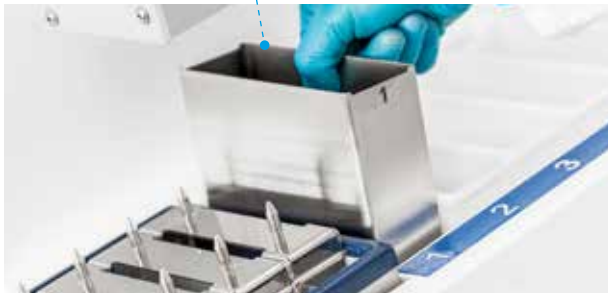


Cromatec II

Stainer with highest throughput

Cromatec II is based on model **Cromatec I** featuring an additional heating station. According to the user's requirement, it can be used as de-paraffinization or heating station. When used as a de-paraffinization station, the heating function is additionally supported by a laminar air flow to warm up the slides in the slide basket quickly and evenly.

Cromatec II
cuvette as
de-paraffinization station



Cromatec II
cuvette as
heating station



Highlights Cromatec II

- Integrated heating station
- Alternatively usable for de-paraffinization or heating
- Easily removable heating station for easy cleaning
- Intuitively programmable heating parameters

Standard components

Cromatec I or Cromatec II
Staining cuvettes (20 pcs.)
Washing cuvettes (6 pcs.)
Heating station (only Cromatec II)
Basket carrier (6 pcs.)
Slide baskets (6 pcs.)
Transport container with lifter
Xylene container insert with cover for unloading station
Supply and drain hose
Mains cable
Manual

Optional accessories

	Item No.	
Cover for Cromatec cuvettes, set	41230587	new
Adapter clip for SAKURA basket (20 slides)	41000900	
Adapter clip for Shandon Varistain Gemini basket	41220504	new
Further adapters on request		

Specifications

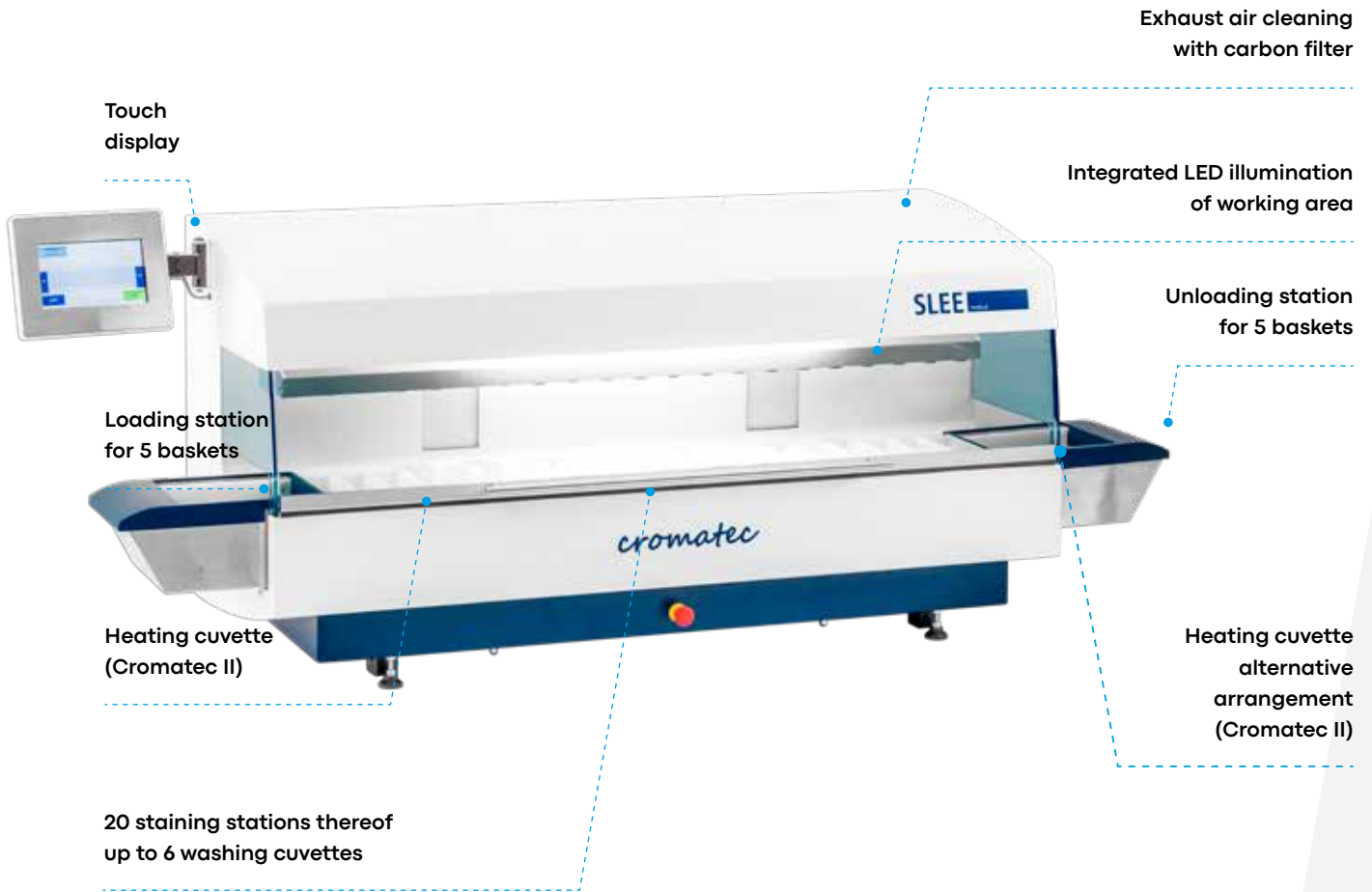
	Cromatec I Cromatec II	
Number of stations	20	
Capacity of slide baskets	30 slides	
Loading capacity	20 slide baskets	
Throughput slides	up to 1,800 pcs./hrs.	
Volume staining / washing cuvette	400 ml	
Number of washing cuvettes	up to 6	
Loading / unloading stations	5 slide baskets each 20 programmes, with up to 20 steps each	
Programmes		
Incubation period	5 sec. up to 1 hrs. up to 200 m ³ /hrs., nominal diameter for rear connection to central extraction system Ø 100 mm	
Exhaust / exhaust air volume		
UPS back-up time	up to 4 hrs.	
Selectable temperature range	-	30 °C up to 70 °C
Process time	-	0 sec. up to 59 min., 59 sec.
Electrical parameters	100 - 240 V, 50/60 Hz	
Dimensions (w x d x h)	1,560 x 640 x 620 mm	
Dimensions , with lid open (w x d x h)	1,560 x 750 x 820 mm	
Weight	110 kg	115 kg

Cromatec I and Cromatec II

The devices can be adapted accordingly to the use of slide baskets from other manufacturers. Please contact us if required.

Easy operation

Everything under control at all times. Super easy and absolutely reliable.



Under control



7" touch display for real-time process monitoring as well as fast and direct interaction with the device. Designed for easy and effective parameter settings, multilingual.

Process monitoring



All steps and their individual run time are clearly visible and under control at any time. Start and end times are clearly visible to control the workflow. Real-time monitoring via app on smart device possible.

Reagent Management System



The Reagent Management System helps the user to schedule the exact timing of changing the reagents. This ensures reproducible, high-quality staining run by run.

Customized protocols



Up to 20 user-defined staining programs can be saved under individual names. The Cromatec stainer enables the user to define the process time for each single step.

Loading station



Continuous loading using the loading station. Baskets are automatically taken out of the loading station when the Cromatec is ready to process the next staining step.

Easy unloading



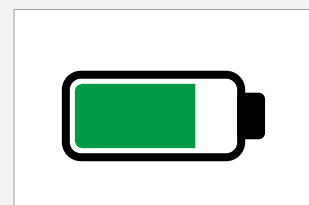
Easy unloading of 3 slide baskets using the special lifter. The removed baskets can be temporarily stored in the transport container which is also included in the standard equipment of the device.

Cuvette arrangement



Filling of the reagents or cleaning of the cuvettes by simple removal. Washing cuvettes can be freely positioned or used as additional staining cuvettes.

Safety



In case of a power failure the Cromatec continues the staining up to 4 hours due to the integrated uninterruptible power supply (UPS) and finishes the protocols safely. The power failure is shown on the display and in the app.

Slee Device Manager App

for Cromatec I / II

Interruptions in the staining process lead to bad results and consequently to high manual reworking efforts and sometimes even to a loss of the specimen. Bluetooth offers an easy possibility to connect tablets and smartphones with the Cromatec. The current status of the staining process in real-time can

be monitored at any time with the Slee Device View App. In case of any interruption (e.g. power failure) or an unauthorized interference (e.g. opening the hood) an information or warning message is provided by the app. The app enables the user to monitor and display several Cromatec stainers simultaneously.



Slee
Device
View App.
Management
at its best.

MAS

Multi protocol stainer

The tissue stainer **MAS** combines flexibility with speed and opens new dimensions in the field of automation. Due to the large number of 44 stations it is possible to work simultaneously with different staining protocols. The device can process up to 12 baskets containing 30 slides each. Programming and process control is executed via colored LCD display.

The Reagent Management System (RMS) ensures high sample quality and helps to reduce consumption and costs. User safety and comfort are ensured by a highly efficient integrated exhaust system including carbon filter.

Highlights

- 4 x loading stations
- 4 x unloading stations
- 6 x washing cuvettes with controlled rinse water inlet
- 30 x staining stations with agitation
- 2 drying stations
(in combination with 4 water baths)
- Carbon filter or tubing for exhaust system
- Universal power input 230 V, 50/60 Hz

Item No.

MAS 230 V, 50/60 Hz 14000500

MAS 230 V, 50/60 Hz
with drying stations 14000502

MAS 230 V, 50/60 Hz
with conveyer to coverslipper MCS I 14000600

MAS 230 V, 50/60 Hz
with conveyer to coverslipper MCS I
and drying stations 14000504

MAS 115 V, 60 Hz on demand





MAS interior with cuvettes

Standard components	MAS	MAS with drying stations	MAS with conveyer to coverslipper MCS I	MAS with conveyer to coverslipper MCS I and drying stations
Loading stations (4 pcs.)	✓	✓	✓	✓
Unloading stations (4 pcs.)	✓	✓	✓	✓
Staining cuvettes (30 pcs. à 360 ml)	✓	✓	✓	✓
Washing cuvettes (6 pcs.)	✓		✓	
Washing cuvettes (4 pcs.)		✓		✓
Drying stations (2 pcs.)		✓		✓
Slide baskets (4 pcs. up to 30 slides each)	✓	✓	✓	✓
Carbon filter	✓	✓	✓	✓
Conveyer system to coverslipper MCS I			✓	✓
Mains cable	✓	✓	✓	✓
Manual	✓	✓	✓	✓



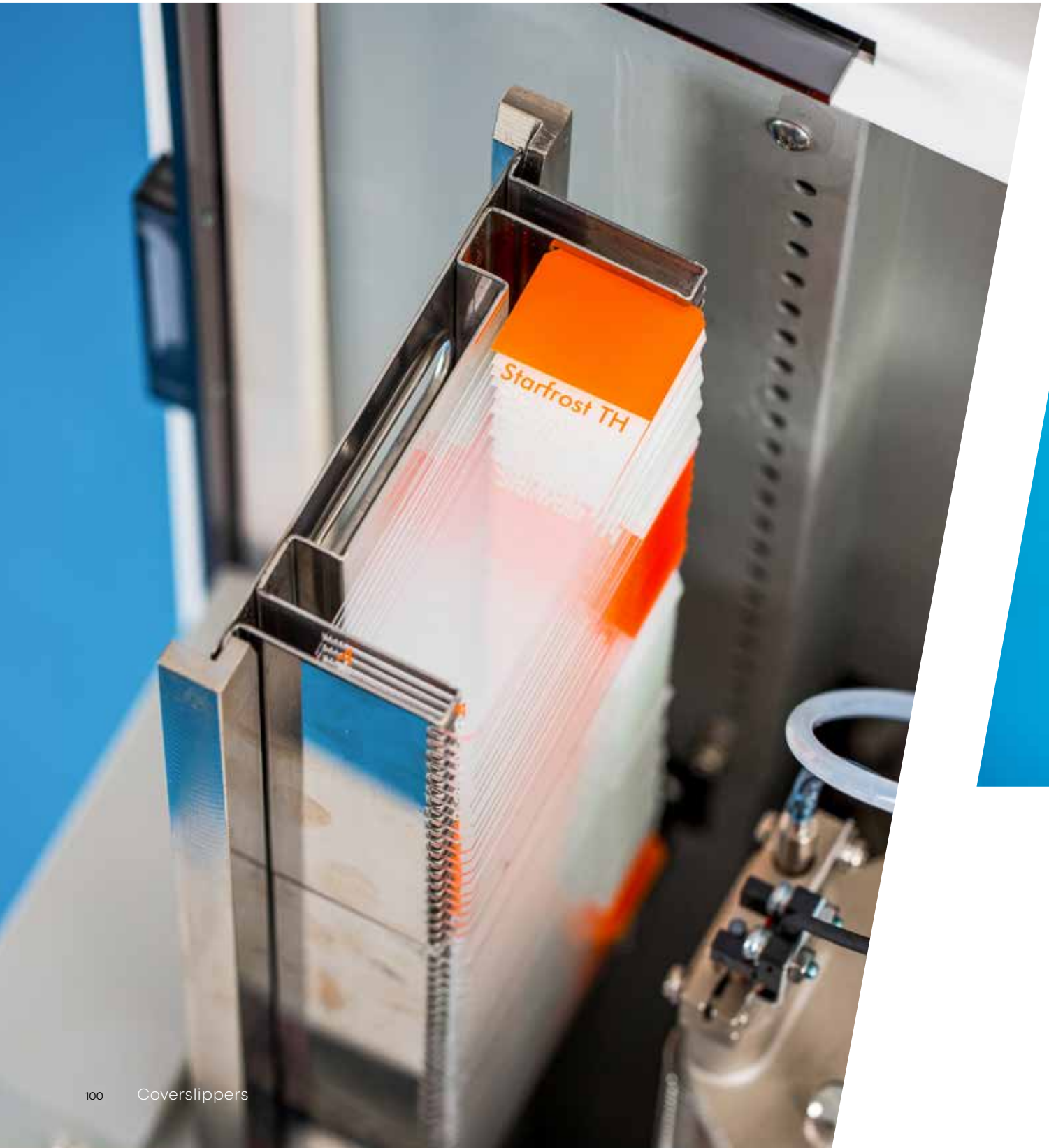
Specifications

Max. number of program steps	40
Incubation time for each station	1 sec. up to 59 min.
Drip collection	adjustable drain time from 0 to 9 sec. patented drip collection technology
Stations, total	44 4 loading stations 4 unloading stations 30 incubation stations with agitation
Including	6 washing stations for running water
Optional	2 drying stations (temperature adjustable from 40 °C up to 90 °C) with 4 washing stations
Electrical parameters	230 V, 50/60 Hz
Dimensions (w x d x h)	1,210 x 670 x 640 mm
Weight w/o accessories	115 kg

Coverslippers

Highly reliable systems for a smooth workflow in the laboratory. The Slee coverslippers operate to the highest quality standards.

Make your workflows more effective!





MCS I

Coverslipper
(to be combined with MAS multi protocol stainer)

MCS I

Coverslipper (to be combined with MAS multi protocol stainer)

The coverslipper **MCS I** can be directly connected to the stainer **MAS**. Simplify workflows: staining and coverslipping in one step!



Highlights

- MCS I can be directly connected to the stainer MAS
- Simplified step of manual handover of the sample holders to full automation
- Space saving combination

Item No.

MCS I 230 V, 50/60 Hz

14000000

MCS I 115 V, 60 Hz

on demand



MAS multi
protocol stainer
(not included)



Standard components

Slide baskets

(8 pcs. up to 30 slides each)

Cover glass holder (50 or 60 mm, 1 pcs.)

Carbon filter (2 pcs.)

Mains cable

Manual

Specifications

Processing speed

up to 500 slides / hrs.

Dispensing volume

30 - 150 μ l

Dimensions (w x d x h)

630 x 670 x 640 mm

Weight w/o accessories

65 kg

Centrifuges

Slee offers two different centrifuge models for diverse requirements and applications in laboratory routine. Slee centrifuges allow you to use the respective model flexibly, customize it and increase the efficiency of your laboratory.





CS I

Cytocentrifuge

CS II

Cytocentrifuge with 10 memory programmes,
equipped with cooling depending on model

CS I / CS II

Cytocentrifuges

CS I and **CS II** centrifuges are a cost-effective alternative for monolayer cell preparation, providing consistent performance and user friendliness. The systems are equipped with an open or closed rotor for up to 12 loading positions which can be easily removed for external loading.

Single or double sample chambers are available as disposable or reusable after proper cleaning. For a flexible use of the system a variety of sediment rotors are available on request. The **CS II** centrifuge is depending on the model equipped with cooling. Up to 10 memory programmes can be saved.

Highlights

Flexible selection and handling of rotors

- Cytocentrifugation open or closed (12 loading positions)
- Easily removable rotor for outside loading
- Large variety of rotors available (sediment, cytocentrifuge)
- CS II with optional cooling and up to 10 memory programmes

Suitable consumables

- Cytofunnel single or double (reusable or disposable)
- Large volume ECOfunnel® (reusable or disposable)
- Filter cards

Easy and safe handling

- Convenient preparation
- Slide clips applicable to reusable and disposable funnels
- Slide label readable at any time
- Indication of the RCF during centrifugation

	Item No.
CS I 230 V, 50/60 Hz Open rotor	15500000
CS I 230 V, 50/60 Hz Closed rotor	15500001
CS I 115 V, 60 Hz	on demand

	Item No.
CS II 230 V, 50/60 Hz Open rotor	15500100
CS II 230 V, 50/60 Hz Closed rotor	15500101
CS II 230 V, 50/60 Hz Open rotor, with cooling	15501100
CS II 230 V, 50/60 Hz Closed rotor, with cooling	15501101
CS II 115 V, 60 Hz	on demand





CS rotor with 12 loading positions

Standard components	CS I Open rotor	CS I Closed rotor	CS II Open rotor	CS II Closed rotor
Cellclip rotor, open (12 positions)	✓		✓	
Cellclip rotor, closed (12 positions)		✓		✓
Cellclip (stainless steel, 12 pcs.)	✓	✓	✓	✓
Cytofunnel, reusable (12 pcs.)	✓		✓	
Filter cards for cytofunnel, reusable Item No. 39910001 standard (200 pcs.)	✓	✓	✓	✓
Cellslides Item No. 39910003 (100 pcs.)	✓	✓	✓	✓
Mains cable	✓	✓	✓	✓
Manual	✓	✓	✓	✓

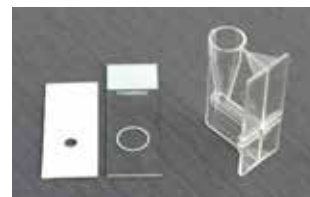


Specifications	CS I	CS II
Application	cytology	cytology, laboratory
Cooling / temperature	-	down to -20 °C (optional)
Cytofunnel capacity	single 0.5 ml / chamber double 0.5 ml / chamber ECOfunnel® 5 ml / chamber	single 0.5 ml / chamber double 0.5 ml / chamber ECOfunnel® 5 ml / chamber
Memory programmes	-	up to 10
Rotor capacity	up to 12	up to 12
Applicable rotors	cellclip rotor (cytocentrifugation) swing-out rotor (different sizes) fixed angle rotor (different sizes)	cellclip rotor (cytocentrifugation) swing-out rotor (different sizes) fixed angle rotor (different sizes)
Centrifuge operation	up to 6,000 rpm depending on the selected rotor), timer 0 - 99 min.	up to 15,000 rpm depending on the selected rotor), timer 0 - 99 min.
Safety	automatic rotor recognition, lid locking and holding	automatic rotor recognition, lid locking and holding
Electrical parameters	230 V, 50/60 Hz	230 V, 50/60 Hz
Dimensions (w x d x h)	370 x 430 x 260 mm	400 x 700 x 350 mm
Weight	25 kg	29 kg

Reusable preparation systems

Cytofunnel single, reusable

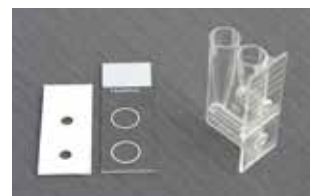
	Quantity	Item No.
Cellclip	1 pcs.	39910031
Cytofunnel single	12 pcs.	39910000
Filter cards (only for cytofunnel single 39910000) up to 0.5 ml	200 pcs.	39910001
Filter cards (only for cytofunnel single 39910000) thin, up to 0.4 ml	200 pcs.	39910006
Cellslides single , uncoated	100 pcs.	39910002
Cellslides single , coated	100 pcs.	39910003



Cytofunnel single, reusable

Cytofunnel double, reusable

	Quantity	Item No.
Cellclip	1 pcs.	39910031
Cytofunnel double	12 pcs.	39910010
Filter cards for cytofunnel double up to 2 x 0.5 ml	500 pcs.	39910011
Cellslides double , uncoated (only for cytofunnel double, reusable 39910010)	100 pcs.	39910012



Cytofunnel double, reusable

Cytofunnel ECOfunnel®, reusable

	Quantity	Item No.
Cellclip	1 pcs.	39910031
Cytofunnel ECOfunnel®	12 pcs.	39910020
ECOseal seal for ECOfunnel®	100 pcs.	39910021
ECOslides , coated	100 pcs.	39910022



Cytofunnel ECOfunnel®, reusable

Rotors

Rotor (closed)

CS centrifuge, removable, 12 positions

Item No.

39910100

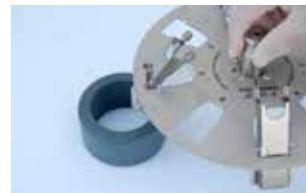


Rotor (open)

CS centrifuge, removable, 12 positions

Item No.

39910050



EASY rotor (closed)

12 positions, without stainless steel clips,
for EASY / double cytofunnel

Item No.

15500600



EASY rotor (open)

12 positions, without stainless steel clips,
for EASY / double cytofunnel

Item No.

15500601



Swing-out rotor 8-point

for 15 ml

Item No.

39910042



Swing-out rotor 6-point

for 50 ml

Item No.

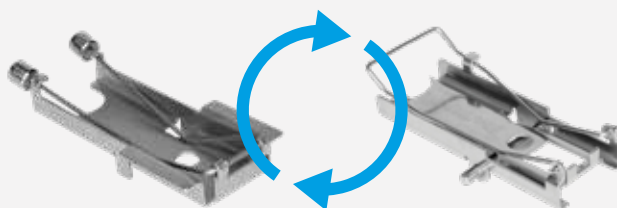
39910043

Adapter for 15 ml (only for 39910043)

39910044



The **cellclip of the CS series** can be easily exchanged for a third-party cellclip!



Cellclip of the CS series

Third-party cellclip

Disposable preparation systems

EASY cytology funnel can only be used in Thermo Cytospin or with the EASY rotor of the **CS** centrifuge!

EASY cytofunnel single, disposable

With white filter card up to 0.5 ml

Quantity **Item No.**

40 pcs. 39910090

With brown filter card up to 0.5 ml

on demand



EASY cytofunnel single

EASY cytofunnel double, disposable

With white filter card up to 2 x 0.5 ml

Quantity **Item No.**

40 pcs. 39910091

With brown filter card up to 2 x 0.5 ml

on demand



EASY cytofunnel double

Cytofunnel single, disposable

Cellclip

Quantity **Item No.**

1 pcs. 39910031

Cytofunnel single up to 0.5 ml

100 pcs. 39910004

Cytofunnel single up to 0.5 ml

500 pcs. 39910005

Cellslides single, uncoated

100 pcs. 39910002

Cellslides single, coated

100 pcs. 39910003



Cytofunnel single, disposable

Cytofunnel double, disposable	Quantity	Item No.
Cellclip	1 pcs.	39910031
Cytofunnel double, sample chamber with 2 shifted holes, up to 2 x 0.5 ml	100 pcs.	39910014
Cytofunnel double, sample chamber with 2 shifted holes, up to 2 x 0.5 ml	500 pcs.	39910015
Cellslides double, uncoated (only for cytofunnel double 39910015)	100 pcs.	39910016
Cellslides double, coated (only for cytofunnel double 39910015)		on demand



Cytofunnel double,
disposable

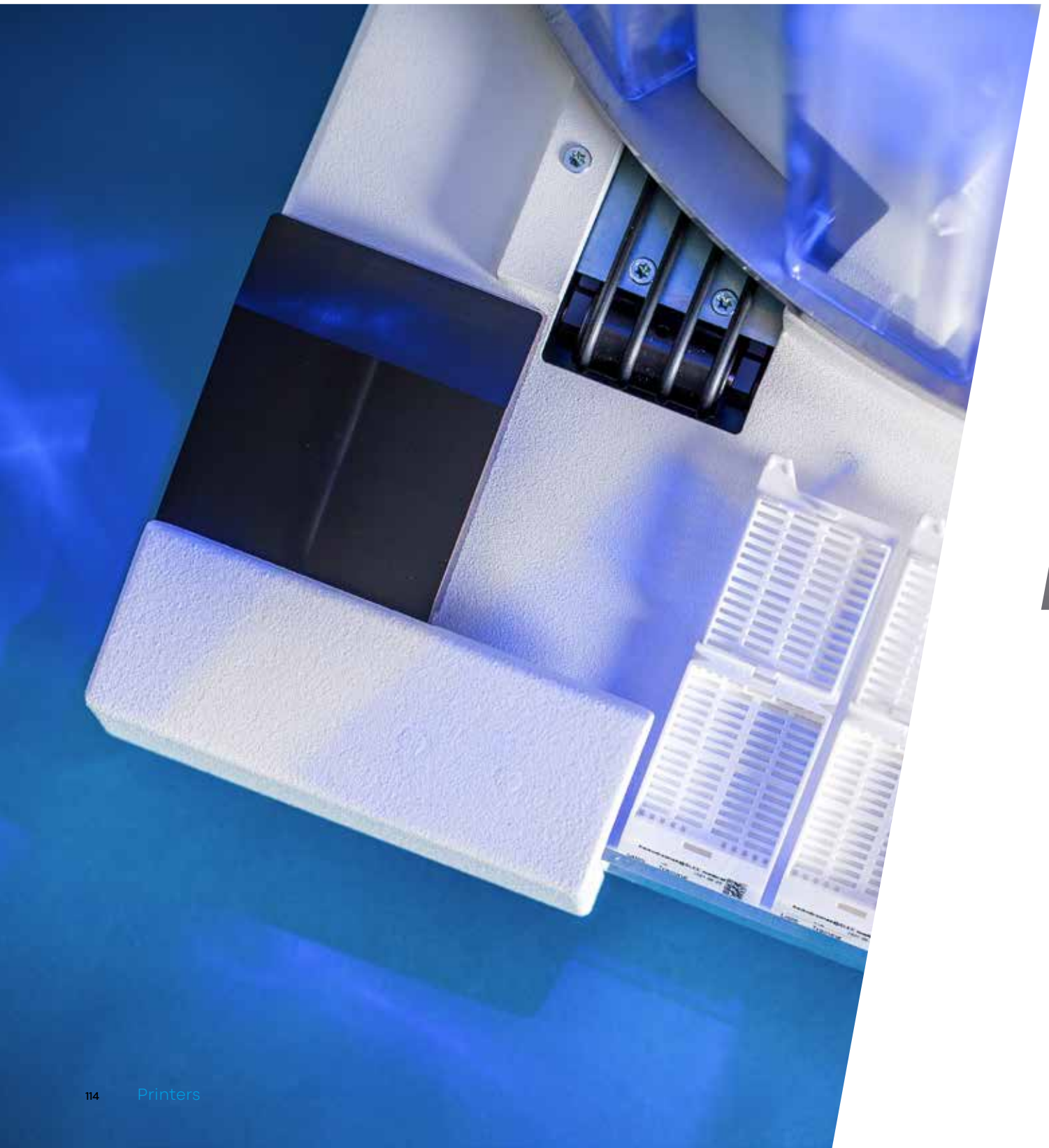
ECOfunnel®, disposable	Quantity	Item No.
Cellclip	1 pcs.	39910031
ECOfunnel®, up to 5 ml	100 pcs.	39910023
ECOfunnel®, up to 5 ml	500 pcs.	39910024
ECOSlides, coated	100 pcs.	39910022
ECOSlides, uncoated		on demand



ECOfunnel®,
disposable

Printers

Slee printer solutions improve patient safety in your laboratory and help optimize daily workflow. Sources of error are eliminated, e.g. unintentional detachment of labels, smudging or illegibility of handwriting.





Printtec S

Slide printer

Printtec C

Single cassette printer

Autoloader

Batch printer

Overview

Printers, Autoloader



Printtec S

Slide printer

100 slides per magazine,
programmable ID chip, slide counter

Output tray: 15 slides

Printing speed

black	9 slides / min.
monochrome	5 slides / min.
multicolor	4 slides / min.

Specifications

100 - 240 V, 50/60 Hz

180 x 320 x 218 mm (w x d x h)

7.6 kg



Printtec C

Single cassette printer

1 cassette is inserted manually
and removed after printing.

-

Printing speed cassette printing (single)

black	9 cassettes / min.
monochrome	6 cassettes / min.
multicolor	5 cassettes / min.

Specifications

100 - 240 V, 50/60 Hz

283 x 312 x 244 mm (w x d x h)

7.5 kg



Printtec C
printer for single
cassettes is not
included!

Autoloader

*for batch printing**

Loading chutes: 4 magazines x 40 cassettes

Output: 7 cassettes

Output extension tray: 10 cassettes,
multiple extendable +10, +10, +10 cassettes

Output tray: 7 cassettes

Printing speed in combination with Printtec C

black 8 cassettes / min.

monochrome 5 cassettes / min.

multicolor 4 cassettes / min.

Specifications

100 - 240 V, 50/60 Hz

304 x 658 x 490 mm (w x d x h)

33.6 kg

* **Note:** Cannot be used separately, but only in combination with the single cassette printer Printtec C!

Printtec S

Slide printer

Slee's **Printtec S** slide printer can significantly increase the efficiency of your lab while helping to reduce the risk of misidentification of specimens. It prints directly onto slides, eliminating handwriting or expensive, difficult to apply xylene-resistant labels.

With impressive 300 dpi print resolution, you can print text, graphics and logos along with high-resolution linear and 2D bar codes on every slide you process. Printtec S is also a COLOR slide printer. This revolutionary feature lets

you purchase and keep inventory of only one slide color – plain white. With the slide printer you can print a wide range of colors and patterns for faster identification.



Highlights

- Black or full color printing of text, graphics, barcodes and QR codes on demand
- Reduction of inventory effort for different colored slides by using only pure white slides and printing in color
- Output tray capacity:
15 slides
- Magazine capacity:
100 slides with slide counter
- Print directly onto slides
- Small footprint
- Chemical and UV resistant print to withstand common processes in laboratories - reliable identification of slides even after several years
- USB 2.0 interface for easy and direct connection to Windows 8.1 / 10 based devices like PCs and tablets

Standard components

Blue slide magazine for 100 slides
Standard ribbon (black, 1 pcs.)
Slides
USB cable
Printtec cleaning pen
Mains cable
USB stick with manuals
PTLAB SE software , for single workplace solutions
Quick start guide

Item No.

Printtec S 100 - 240 V, 50/60 Hz	10050001
Printtec S with high pressure 100 - 240 V, 50/60 Hz	10050004

Optional accessories

Item No.

Blue slide magazine for 100 slides, spare magazine to optimize the workflow	39300002
Colored ribbon for Printtec S standard and Printtec S with high pressure, TC 1	39300008
Colored ribbon for Printtec S standard, TC 2	39300007
Colored ribbon for Printtec S standard and Printtec S with high pressure	39300005
Monochrome ribbon black for Printtec S standard and Printtec S with high pressure, TC 1	39300006
Monochrome ribbon black for Printtec S standard, TC 2	39300009
Printtec cleaning pen	39300015
Barcode Scanner Datalogic Medical Grade 2D incl. stand	39300011
Printhead	39300001
PTNet server	39300014
PTLAB PE software , LIS version	39302000
Further accessories on request	

Specifications

Capacity	
magazine	100 slides in the magazine, programmable ID, slide counter
output tray	15 slides
Printing speed	
black	9 slides / min.
monochrome	5 slides / min.
multicolor	4 slides / min.
Electrical parameters	100 - 240 V, 50/60 Hz
Dimensions (w x d x h)	180 x 320 x 218 mm
Weight w/o accessories	7.6 kg

Slide magazine



Slide output



Easy handling

Printtec S is designed for efficient, hands-free operation. Slides are stored in easy-to-load magazines - away from dust and other potential contaminants. It takes just a few seconds to change the magazine if you need standard slides for one study and positively-charged slides for others. The level of slides remaining in a magazine is easily viewed through the magazine's transparent blue LED backlit case.



Direct print

Prints directly onto slides - eliminates illegible handwritings or labels that are hard to apply and can potentially fall off. Avoids disturbances of laboratory equipment.



Free software

Free PTLab™ software - template-driven software for your individual design and data workflow and configurable data stream connection to LIS systems.

Output extension for Printtec S, slide printer

The output extension for up to 100 slides enables the **Printtec S** to print larger quantities of slides without interruption.

Item No.

Output extension
for up to 100 slides

39300003



Highlights

- Ideal for printing larger quantities, up to 100 slides if required
- Inexpensive solution for batch processing, avoids waiting periods
- Removable slide container made of stainless steel for quantities up to 100 slides, for continuous operation
- Simple, low-maintenance design
- Easy mounting under the Printtec S

Printtec C

Single cassette printer

Slee's cassette printer **Printtec C** can significantly increase the efficiency of the laboratory and at the same time reduce the risk of misidentification of specimens. The cassette printer **Printtec C** prints in black, monochrome or multicolor as required! The user can print manually loaded cassettes with texts, graphics and logos along with linear and 2D bar codes directly onto the printing surface of the cassettes. This enables a more efficient workflow and additionally increases the safety for the patient.



Cassette tray

Highlights

- Modular design
- Setting and selection of color variants to increase safety in the laboratory
- Quick and easy installation
- Capacity for one single cassette, for on-demand print
- For standard cassettes with 35° to 45° angles with either lid on or off, no adjustments needed
- High printing speed
- USB 2.0 interface for easy and direct connection to Windows 8.1 / 10 based devices like PCs and tablets

Item No.**Printtec C 100 - 240 V, 50/60 Hz**

10050002

Standard components

Cassettes**Standard ribbon**, black, 1 pcs.**USB cable****Printtec cleaning pen****Mains cable****Memory card** with manuals**Quick start guide**

Optional accessories

Item No.**Colored ribbon** for Printtec C, TC 1 39300008**Monochrome ribbon black**
for Printtec C, TC 1 39300006**Printtec cleaning pen** 39300015**Barcode scanner** Datalogic Medical
Grade 2D incl. stand 39300011**Printhead** 39300001**PTNet server** 39300014

Further accessories on request

Specifications

Capacity

1 cassette

The cassette is inserted manually and removed after printing.

Printing speed cassette printing
(single)

black 9 cassettes / min.

monochrome 6 cassettes / min.

multicolor 5 cassettes / min.

Electrical parameters 100 - 240 V, 50/60 Hz**Dimensions** (w x d x h) 222 x 244 x 244 mm**Weight** w/o accessories 7.5 kg

Direct print



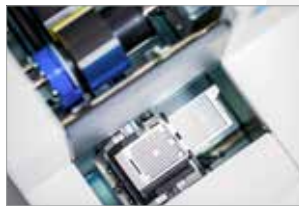
Prints directly onto cassettes - eliminates illegible handwritings or labels that are hard to apply and can potentially fall off.

Free software



Free PTLab™ software - template-driven software for your individual design and data workflow and configurable data stream connection to LIS systems.

Easy handling



A cassette is inserted manually and the print is started via the operating software. When the print is finished, the cassette is removed again.

Single cassette printer



One cassette at a time is loaded for single cassette print. Printing speed is extremely fast at about 6 seconds per cassette.

Variety of colors



The cassettes can be printed in black, single color or multicolor, depending on your needs! The possibility of color variation significantly increases the safety and efficiency of the laboratory.

Optional Autoloader*



4 x 40 cassettes can be automatically loaded for a batch print. Printing speed is very fast at about 8 seconds per cassette.

* The autoloader version is available as an expansion to the Printtec C single cassette printer.

Slee
Always
focusing
on patient's
well-being.

Autoloader* for batch printing and color variations

The expansion of the cassette printer **Printtec C** with the **Autoloader** offers even more efficiency to the workflow of the laboratory while reducing the risk of misidentification of specimens. The **Autoloader** has been specially designed for fast and efficient processing. The 4 cassette reservoirs tremendously increase the number of the possible cassette prints. The magazine with the cassettes is simply inserted into one of the 4 loading chutes.

The quantity of remaining cassettes can be easily controlled through the front of the transparent magazine, illuminated with blue LED backlight, but is additionally displayed on the LCD screen.



Printtec C printer for single cassettes is not included!

Highlights

- 4 transparent loading chutes with a capacity of up to 40 cassettes / magazine
- Capacity of up to 160 cassettes for on-demand or batch printing
- Output capacity: 7 cassettes, expandable with 10 cassettes with each output extension tray
- Possible forwarding of the cassettes via the output tray extension to the processing station
- Prints on standard cassettes with 35° to 45° angles with either lid on or lid off, no adjustments needed
- Printing speed*:
 - up to 8 cassettes per minute (black)
 - up to 5 cassettes per minute (monochrome)
 - up to 4 cassettes per minute (multicolor)
- USB 2.0 interface for easy and direct connection to Windows 8.1 / 10 based devices like PCs and tablets

* Note: Cannot be used separately, but only in combination with the single cassette printer Printtec C!

Item No.

Autoloader 110 - 240 V, 50/60 Hz
for cassette printer Printtec C*

10050003

Standard components

Magazine for loading chutes incl. separator, set of 4

6-pin-mini-DIN cable

Output extension tray, 1 pcs.

Mains cable

Memory card with manuals

Quick start guide

Optional accessories

Item No.

Magazine for loading chutes
incl. separator, set of 4

39300004

Output extension tray

10510000

6-pin-mini-DIN cable

39300017

Further accessories on request

Specifications

Capacity

Loading chutes 4 magazines x 40 cassettes

Output 7 cassettes

Output extension tray 10 cassettes, multiple extendable +10, +10, +10 cassettes

Printing speed

in combination with Printtec C*

black 8 cassettes / min.

monochrome 5 cassettes / min.

multicolor 4 cassettes / min.

Electrical parameters 110 - 240 V, 50/60 Hz

Dimensions (w x d x h) 305 x 658 x 490 mm

Weight

w/o accessories 33.6 kg

* **Note: Cannot be used separately, but only in combination with the single cassette printer Printtec C!**



Printtec C printer for single cassettes is not included!

Loading chutes with magazines

Output



Output extension tray

The extension of the output tray is multiple expandable with +10 cassettes each. A simple plug-in extends the output area so the workflow becomes more relaxing.



Direct print

Prints directly onto cassettes - eliminates illegible handwritings or labels that are hard to apply and can potentially fall off.



Free software

Free PTLab™ software - template-driven software for your individual design and data workflow and configurable data stream connection to LIS systems.

Easy handling



The Autoloader version in combination with the Printtec C has been specially designed for fast and efficient processing. The magazines with the cassettes are simply inserted into the loading chutes.

Illuminated loading chutes



The number of remaining cassettes can be easily seen through the transparent loading chutes with blue LED backlight.

Single cassette printer



The printer is also available separately without Autoloader. Load one cassette at a time. Printing speed is extremely fast at about 6 seconds per cassette.

*Autoloader version**



4 x 40 cassettes can be automatically loaded for a batch print. Printing speed is very fast at about 8 seconds per cassette.

* The Autoloader version is available as an extension to the single cassette printer Printtec C.



Ergonomic workplaces

The **Ergotec** workplaces of Slee are the perfect solution for your laboratory set-up. The high-quality ergonomic **Ergotec** working tables are manufactured according to your individual requirements.

The **Ergosit** is a true enrichment for your laboratory. It is a user-friendly, ergonomically sophisticated laboratory chair which increases workplace quality and employee satisfaction. Customize your chairs and inspire your employees!

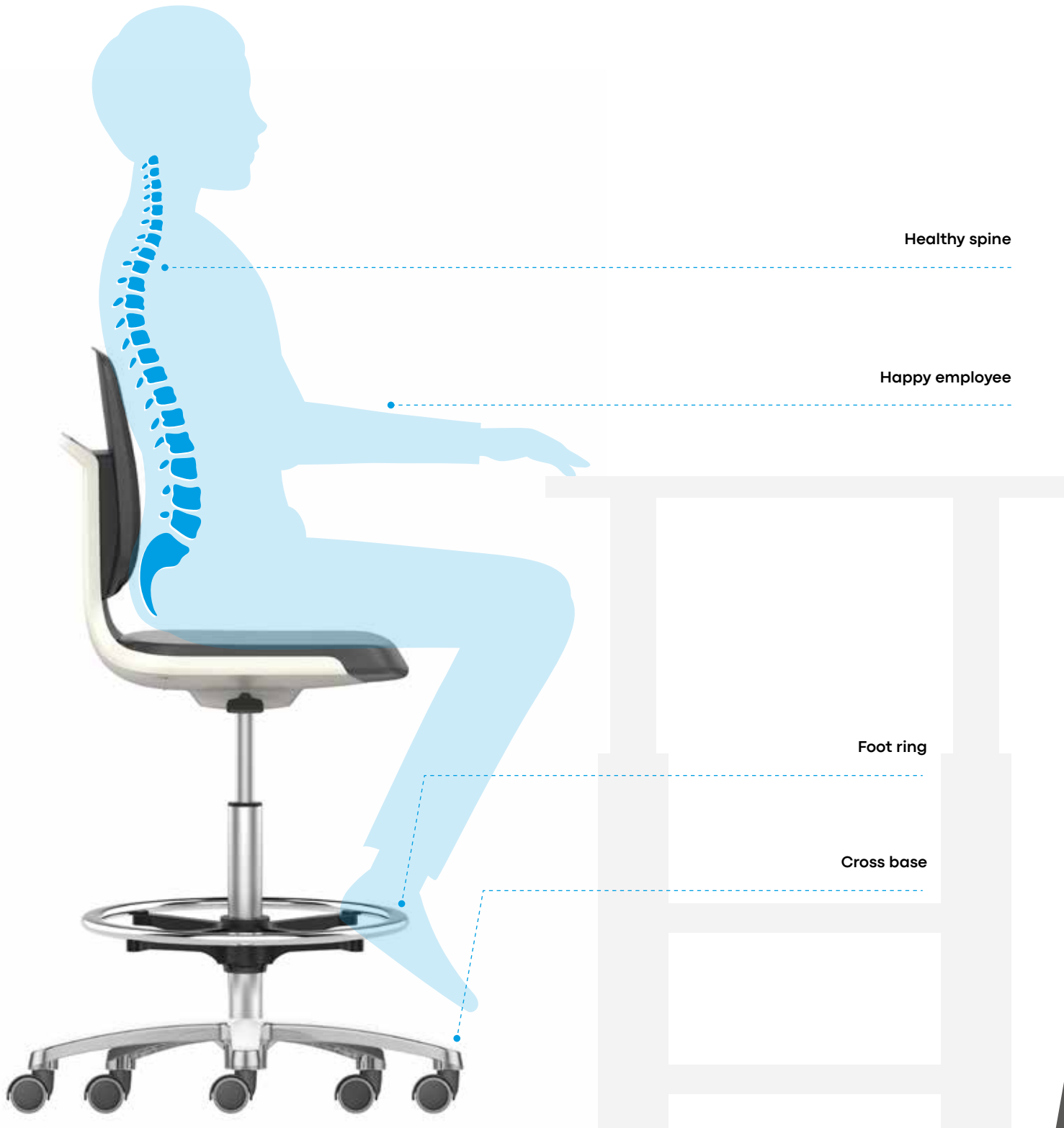
Our ergonomic workstations are suitable for many applications. The dimensions, heights and colors can be customized to the greatest possible extent. The design of the tables can be highly customized to meet customer needs and requirements.

This allows us to manufacture the ultimate workstation perfectly suited to the particular ambient requirements.

The integration of different modules in the table top, such as cooling plate and water bath, is also available. The placement of the modules takes place individually according to customer requests.

Ergosit laboratory chair

With stop & go castors (high version) and foot ring



Item No.

Ergosit high version 10157010

Ergosit low version 10157011

Options*

Cover fabric

Seat color (cf. color palette on the right)

Seat height

Armrests

*Contact us for further information.

Specifications

Seat height high version 560 up to 810 mm

Seat height low version 450 up to 650 mm

Cleanroom class 3 according to ISO 14644-1

Cover fabric integral foam
(extremely robust
and durable)

Seat color integral foam black 2000

Seat support plastic parts gray-white

Cross base polished aluminum

Stop & go castors Ergosit high version only
(Item No. 10157010)

Highlights

- 3D flex function in the back
- Flexible front edge of the seat
- Adjustable height
- Seat shell in various colors
- Handle on the backrest
- GMP compliant
- Contributes to increasing the quality of the workplace and employee satisfaction
- Hygienic design (minimal joints, resistant

- to disinfectants and chemicals, anti-bacterial and anti-germ effects)
- Low weight, mobile through handle, compact design
- Ergonomic and comfortable, complicated adjustments and settings become redundant thanks to the innovative flex functions: seat front edge and backrest

Ergotec worktable

Ergonomic design.

*Physiotherapists and occupational physicians increasingly attach great importance to the ergonomic design of workplaces, in particular the height adjustment of working desks. These desks help to avoid premature fatigue, joint and back pain while working. The **Ergotec** series worktables support this comprehensively. By the way: The work surface withstands most of the reagents used in the histopathology laboratory.*

The design of the tables makes it very easy to switch between sitting and standing while working. Up to 4 different table heights can be saved electronically and recalled by simply pressing a button. This enables users to set their

desired working height at any time and adapt it to their current needs. Ergonomic cutouts in the table for the laboratory chairs create optimal seating and working comfort for the user.



Highlights

- Big range of height adjustability
- 4 different table heights are freely programmable, can easily be recalled
- Easy switching of positions, at the push of a button
- High load capacity up to 400 kg
- Variable selection of table width and depth
- Ergonomic cutout
- Cooling plate, integrated
- Water bath, integrated
- Individually customizable cable channel (switches, plugs etc.)

Item No.

Ergotec - standard version
with height adjustment
1,800 x 800 mm

10120001

More versions on demand

Options*

Item No.

Integrated water bath	10120002
Integrated cooling plate	10120003
Cable channel*	10120004
Workplace with LED illumination*	10120005
Undertable drawer*	10120006
Monitor arm and / or workstation (multiple version available)	on demand
Ergonomic cutout	on demand

new

Specifications

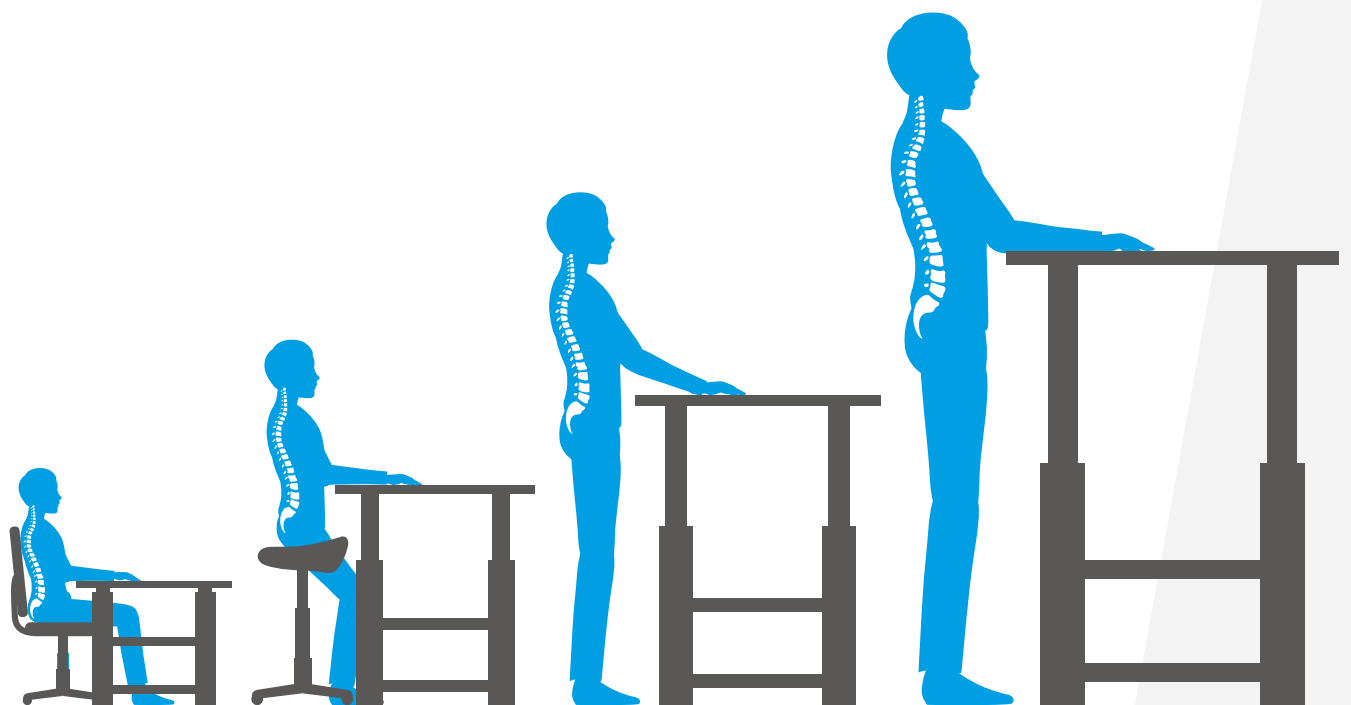
Range of height adjustment	660 up to 1,100 mm
Programmable height levels	4 memory settings
Maximum load	400 kg
Thickness of table top	30 mm
Color of table top	selectable
Maximum dimensions (possible customization)	2,000 x 1,000 mm
Cooling plate dimensions	300 x 320 mm
Cooling plate temperature	+15 °C down to -15 °C
Water bath dimensions	260 x 214 x 60 mm
Water bath temperature	RT up to 85 °C

*Contact us for further information.

***Dimensions, color and equipment
are individually selectable!***



Ergotec worktable with illumination and Ergosit laboratory chair



Undertable drawer



Optionally available. Smaller parts can be stored safely directly at the place. You have everything within reach (image may differ).

Cable channel



Optionally available. Have a neat and clean desktop. All cables remain hidden. The appropriate switches, sockets and USB ports are set according to your personal requirements.

LED illumination



Optionally available. For a perfectly illuminated workplace at all times. Supports fatigue-free work through optimally coordinated LUX strengths.

Programmable height levels



Sitting, standing, sitting. Staying mobile while working has never been easier. The height adjustment turns a static workstation into an active one.

Cooling plate



The cooling plate can be integrated directly into the tabletop at your desired location. The work surface is not displaced by an additional device. Easy to clean.

Water bath



Integrate the water bath directly into the tabletop at your desired location. Keeping all structures flat improves the workflow. Easy filling and emptying.

Consumables

All Slee consumables are subject to the highest quality requirements. Our product range includes blades with plasma coating, tissue embedding paraffin, slides and coverslips as well as the CryoGlue embedding medium and other consumables.



High quality microtome blades

LPS, LPH, HPS

The Slee blades for microtomes feature a special plasma technology, that considerably improves the sharpness as well as the durability of the blades. All Slee microtome blades are made of stainless steel.

Disposable blades (plasma coated)

Item No.

Low profile plasma LPS

for soft specimens, plasma coated:
80 x 8 mm, thickness 0.254 mm, 35° angle,
hardness 1100 Hv, 50 pcs. / box

28407005



Low profile plasma LPH

for hard specimens, plasma coated:
80 x 8 mm, thickness 0.254 mm, 35° angle,
hardness 1100 Hv, 50 pcs. / box

28407004



High profile plasma HPS

for soft specimens, plasma coated:
80 x 14 mm, thickness 0.254 mm, 35° angle,
hardness 1100 Hv, 50 pcs. / box

28407007



Paratec Premium, Paratec Tissue embedding paraffin

Paratec Premium consists of highly purified paraffin. With polymer additive for precise embedding and cutting, melting range 54 - 57 °C. Granulated material: easy and convenient handling. Slee paraffin is DSMO-free.

Paratec Premium	Item No.	Paratec	Item No.
Premium paraffin		Paraffin	
1 kg	30010004	without polymer additive	
2.5 kg	30010006	melting range 54 - 56 °C	
10 kg	30010008	20 kg	30010002
25 kg	30010007		



Slides / coverslips and consumables in premium quality

Perfect consumables for Slee **Printtec S** slide printers / **MCS I** coverslippers, **MEV / MEV +** and **MNT** cryostats.

Slides

StarFrost® slides

26 x 76 x 1.0 mm,
ground edges 90°,
clipped slide corners 45° angle,
color frosted marking area about 20 mm
(available in white, orange, blue, green,
yellow, pink)
50 pcs. / box

Item No.

on demand

StarFrost® slides

26 x 76 x 1.0 mm, adhesive,
ground edges 90°,
clipped slide corners 45° angle,
color frosted marking area about 20 mm
(available in white, orange, blue, green,
yellow, pink)
50 pcs. / box

on demand

StarFrost® slides

26 x 76 x 1.0 mm, advanced adhesive,
ground edges 90°,
clipped slide corners 45° angle,
color frosted marking area about 20 mm
(available in white, orange, blue, green,
yellow, pink)
50 pcs. / box

on demand

Coverslips

StarFrost® coverslips

24 x 50 mm, 100 pcs. / box

Item No.

30001051

StarFrost® coverslips

24 x 55 mm, 100 pcs. / box

30001052

StarFrost® coverslips

24 x 60 mm, 100 pcs. / box

30001053

Consumables for cryostats

Item No.

CryoGlue embedding medium (4 x 125 ml)

30001100

Cryostat low temperature oil, 50 ml

30001011

Cork plates (Ø 20 mm; 100 pcs.)

30001001

Bacteria and virus filter for extraction

33010371

Highlights

- Slee StarFrost® slides in different styles and colors
- Slee StarFrost® coverslips in 3 different sizes, made for automatic coverslipping

Service

We are committed to provide world-class support to our global customers at all times. We strive to advise you professionally before purchase and to support you during installation and initial setup. In addition, it goes without saying that we will always be available as a reliable partner during the longtime use of our products.

You can contact us directly with any kind of questions. In order to process your inquiries in time, please always include the following information:

- User name
- Address
- Phone number
- E-mail
- Type of device
- Serial number of device
- Date of purchase
- Detailed case description

Service Hotline: +49 (0) 6136 76997-0

Service E-mail: service@slee.de

Trainings

Service and application training

Well-trained staff is crucial for the implementation of regular service and maintenance of high quality.

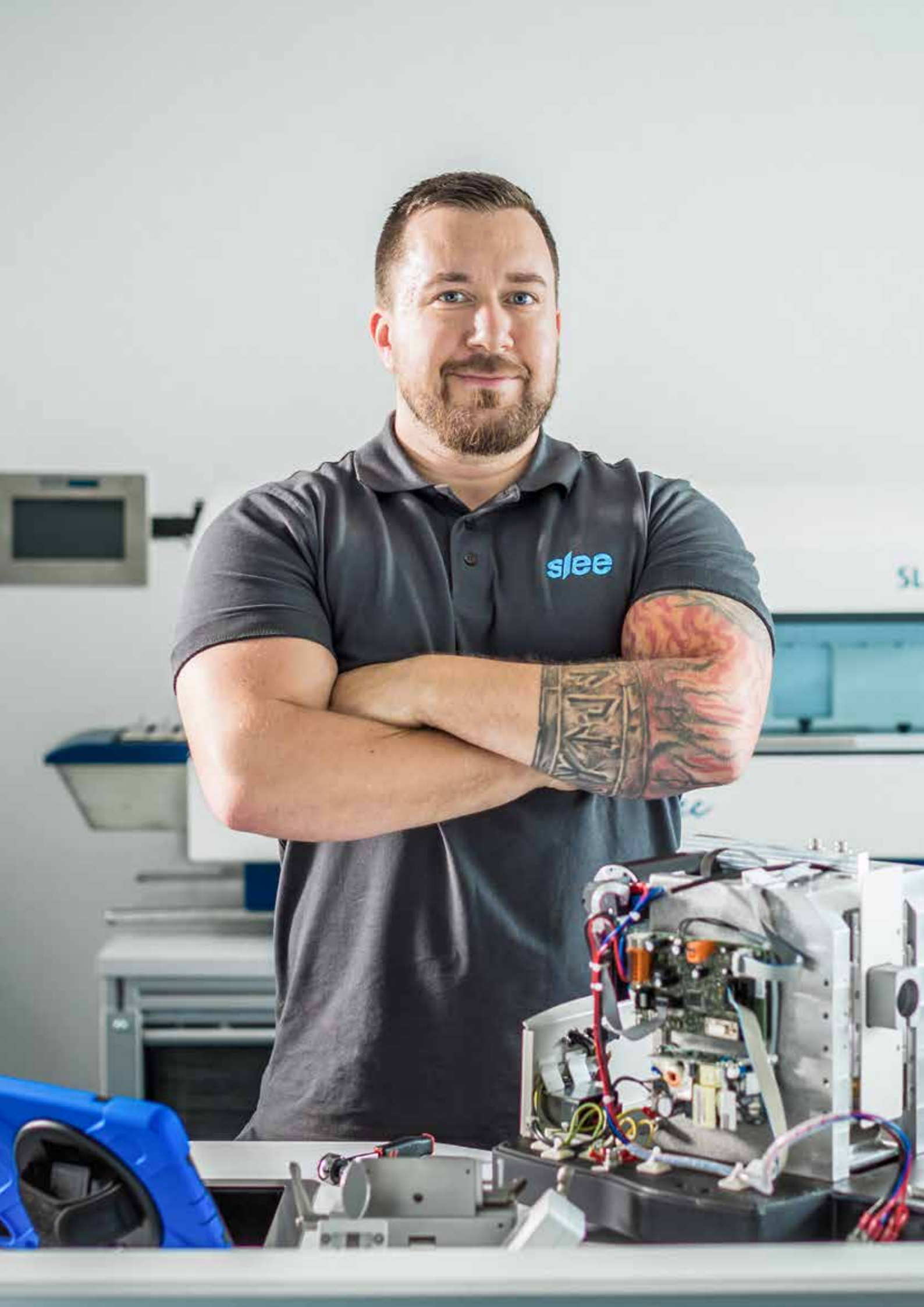
We offer regular service and application training for our worldwide distribution partners.

Visit www.slee.de to access the training schedule and to download the registration form.

Training requests

Tel.: +49 (0) 6136 76997-0

E-mail: mail@slee.de





SLEE medical GmbH · Am Neuberg 14
55268 Nieder-Olm · Germany
www.slee.de

T: +49 (0) 6136 76997-0
E: mail@slee.de



www.slee.de



YouTube



LinkedIn



Instagram