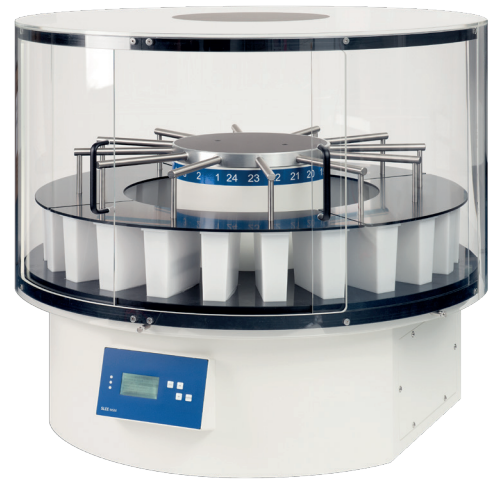


# Product specification

## MSM · Carousel slide stainer

Item No.: 12000205



### Specifications

Nominal supply voltage:	100 – 240 V AC +/- 10%
Nominal frequency:	50 / 60 Hz
Power draw:	250 VA
Protective class:	(1) I
Power fuses:	2x T 6,3 A
Pollution degree :	(1) 2
Overvoltage installation category:	II
Maximum heat emission:	250 J/s
Operating temperature range	+10 to +35 °C
Operating humidity	max. rel. 80 % non-condensing
Storage temperature range	+5 to +55 °C
Storage humidity	max. rel. 80 % non-condensing
Staining cuvette:	24 x 360 ml, white, plastic 130 mm x 40 mm x 135 mm
Transport basket:	1 x plastic, capacity: 30 standard size micro slides
Programming:	Quick Start 20 programs (Incubation time, drip off time, FlexProgramming)
Delayed Start time:	up to 99 hours
Dimensions (W x D x H):	850 x 850 x 570 mm

## Specifications

Weight (w/o accessories):	80 kg
Electrical parameters:	100 - 240 V / 50-60 Hz
Exhaust air volume:	with open reagent containers (lifting unit above) approx. 40m <sup>3</sup> / h*, with closed reagent containers (lifting unit below) approx. 25 m <sup>3</sup> / h* can be sucked off. Nominal diameter on the back is 100 mm. *These values have been measured with an installed carbon filter.

(1) According to IEC 1010, EN 61010

## Standard components

Staining cuvettes (plastic, 24 pcs.)
Transport basket (plastic, 1 pcs.) capacity 30 standard size micro slides
Mains cable
Manual

## Options

	Item No.
Hood for MTP / MSM (Perspex)	11000220
Staining cuvettes	12000260
Slide basket (30 slides)	12000261
Drying station	12000256
Exhaust fan	11000210
Exhaust fan incl. carbon filter	11000211
Carbon filter	11000254

## Comments / additional information:

In case of further questions, please feel free to contact us at every time.

SLEE medical GmbH · Am Neuberg 14  
55268 Nieder-Olm · Germany  
[www.slee.de](http://www.slee.de)

T: +49 (0) 6136 76997-0  
M: [mail@slee.de](mailto:mail@slee.de)



[www.slee.de](http://www.slee.de)



[YouTube](#)



[LinkedIn](#)



[Instagram](#)