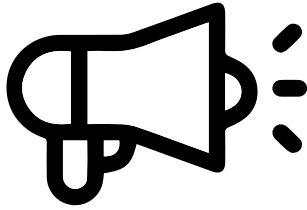


**Slee
workshop
highlight**

**After
show
report
Histo-
logica
2023**

**28 - 29
April 2023**



Great booth.
Innovative products.
Super motivated team.
Highly interested visitors.
A full success!



Histologica 2023

Wow - Thank you all for your great interest!



Many thanks to the Slee team and the team from Histologica as well!

Organization at its best. As every year it was a wonderful occasion to **meet and greet our customers** and device operators from labs all over Germany. Our booth was equipped with a **motivated and eager team**, ready to answer questions, give advice or introduce our innovations!

Ready for take-off: Check out **Ergotec** and **Ergosit** live at our booth.

A true highlight of the show was the **Ergotec** laboratory working place, drawing people's attention to ergonomics and working environment. The Ergosit chair as well as the computer working station attracted lab personnel all over the place. We constantly moved the table up and down **keeping our visitors busy watching!**

Ergotec



Aquatec

CUT 6062



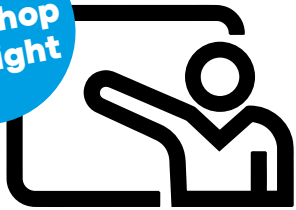
Invincible: **CUT 6062** microtome featuring the **Aquatec** transfer system.

The visitors were really captivated by the **Aquatec** transfer system. The constant water flow drew their attention as much as the fully automated rotary microtome **CUT 6062**. For more information and application videos about our products visit our homepage:

www.slee.de/en



Slee
workshop
highlight



Meet Ute Neubacher,
Ruhr University Bochum,
introducing
„A new look at frozen
sectioning!“

slee
solutions
for pathology



**Ute Neubacher posed the question:
„In which case is a freezing microtome
required?“**

The need for a freezing microtome is as follows: „If cell assemblies and their structures are not only to be examined and assessed in two dimensions, including neurons, glia cells, vascular courses, thick tissue slices from 300 - 400 µm and organoids.“

Cell assemblies and structures in mouse brains ...

... are two of the research topics at the Ruhr University Bochum. The participants of the workshop were able to freeze and cut samples themselves, then transferring the section onto a slide. The **Cuttec S** sliding microtome in combination with the **MTR** quick-freezing unit was the ultimate tool for the demanding neurological cuts. Great job ladies!



Cuttec S

MTR



Hands-on with Slee devices!

The manual sliding microtome **Cuttec S** is designed for all applications in routine, research or industry, always focusing on the needs of the user. Features like the specimen orientation are included as standard components.

The **MTR** quick-freezing unit consists of a compressor cooling system with a 2 m flexible isolation tube and a cooling block which can be adapted to a standard specimen clamp of different types of microtomes.

Find more images of the Histologica on our homepage:

Visit our news section: www.slee.de/en/up-to-date/news/

Check out all of our devices on our homepage:

www.slee.de/en/products/

Contact us, we would love to hear from you:

mail@slee.de or at www.slee.de/en/about-slee/company/

All about Slee
Latest News

