

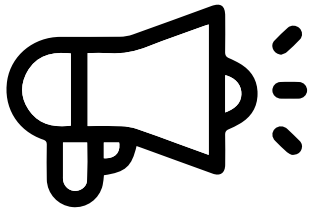


slee

solutions
for pathology

After show report Medica 2023

13th - 16th
November 2023



Thank you so much! This goes out to all of our guests, visitors, and last but not least our clients and all interested persons!



Medica, Duesseldorf

What a show! Medica again set standards in terms of world-wide medical technology business. At the Slee booth there was a melting pot of the top-level exchange of expert knowledge. We love to share some impressions with you! This was the team on our booth. Did you meet them?



Stefan Schock
Managing Director

Heiko Drzonek
Sales & Product Management

Alexander Benjamin
Key Account & Marketing Manager

Maged Benjamin
International Business Development Manager

Katharina Lehr
Marketing & Corporate Communication



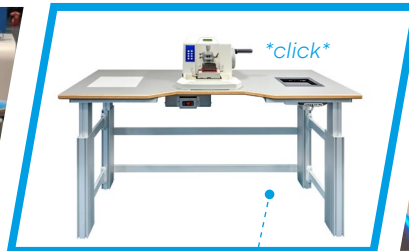
Sunday morning. Still building up. On Monday morning, the booth was ready, nice and shiny!



Highlights 2023

Live at the booth:

We proudly presented a brand new **Ergotec** worktable. With even more features, an innovative working area and of course its well-known ergonomic design. The **Ergotec** is the perfect solution for any laboratory set-up, with optional height adjustment, dimensions and colors that can be individually customized. Want to learn more? Check out our product **video**!



Video Ergotec 

The fully-automatic precision microtome **CUT 6062** featuring the **Aquatec** transfer system drew a lot of attention to our booth. The laminar waterflow of the **Aquatec** together with the vertical movement of the microtome created a lot of interest and was a real visitor stopper. Our application **video** supported the presentation, attracting all histopathology professionals.



Video CUT 6062 

 Video Aquatec

The unique **Cromatec** stainer was also on board, offering the highest throughput in the market for routine histology and cytology at a high level of user friendliness. With the capacity of up to 20 slide baskets and up to 1.800 slides/h being processed and handled at the same time, **Cromatec** is a highly flexible routine staining system. Continuous loading, individually programmable time settings for each station and up to 6 washing cuvettes are only a few highlights. Find out more about **Cromatec** on our homepage: www.slee.de/en/products/cromatec-i-ii/



Video Cromatec 



solutions
for pathology

Impressions I

Share with us some impressions of our guests and visitors at the booth:

It is always a pleasure to get in touch with all of our guests and visitors. Highly interested in our products, open to suggestions and always willing to discuss, reflect, improve. **Thank you very much to all of you. We really enjoyed the show!**



Impressions II

Contact us?

If you missed us at the booth, click on the envelope below to write a direct mail to your contact person. We are looking forward to hearing from you! Questions? Comments? **We are there for you!**



Stefan Schock



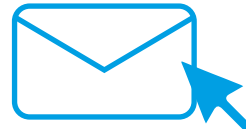
Maged Benjamin



Alexander Benjamin



Heiko Drzonek



Check out all of our devices on our homepage:

<https://www.slee.de/en/products/>

Contact us, we would love to hear from you:

mail@slee.de or via our homepage at <https://www.slee.de/en/about-slee/company/>