

Newsletter No. 02 / 2024

Date: 02-01-2024

New product in our portfolio!

Dear Business Partner!

The Gold standard in microtomy for histology life sciences and material sciences is redefined!

We proudly present the Polycut Legacy - the heavy duty microtome now available at Slee.

Made of metal.

Made for eternity.

Made in Germany.

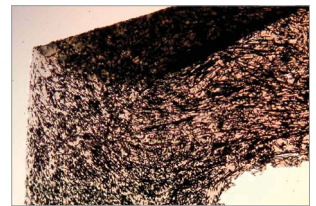
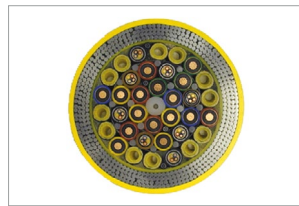
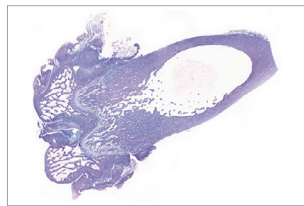
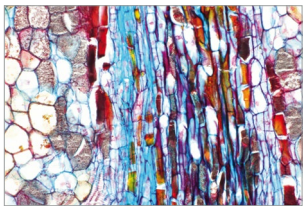


Want to section rodents in one piece?

Life size, up to 200 x 250 x 70 mm



Complete organs, wood or bones, undersea cables, carbon fibres?



Biological specimens, tissues for material sciences, any demanding specimen for research and / or analysis?

Then it is time for the Polycut Legacy! This heavy duty microtome meets your needs. With a max. specimen size of 250 x 200 x 70 mm this is one of the largest available microtomes in the world.

Key advantages:

- High section thickness range 0 - 1,000 μ m
- Huge specimen size 250 x 200 x 70 mm
- 4 motorized sectioning modes
- Control panel
- Control unit
- Foot switch (optional)
- Second screen
- Professional photo-position

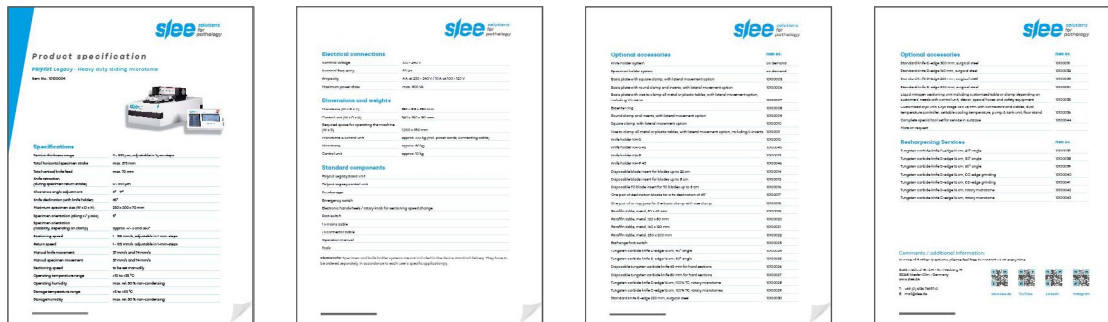
Curious? Have a first look at the Polycut Legacy life at our booth #Z6.J30 at Medlab Middle East 2024!

Learn more about the Polycut Legacy on our homepage.

Brochure:

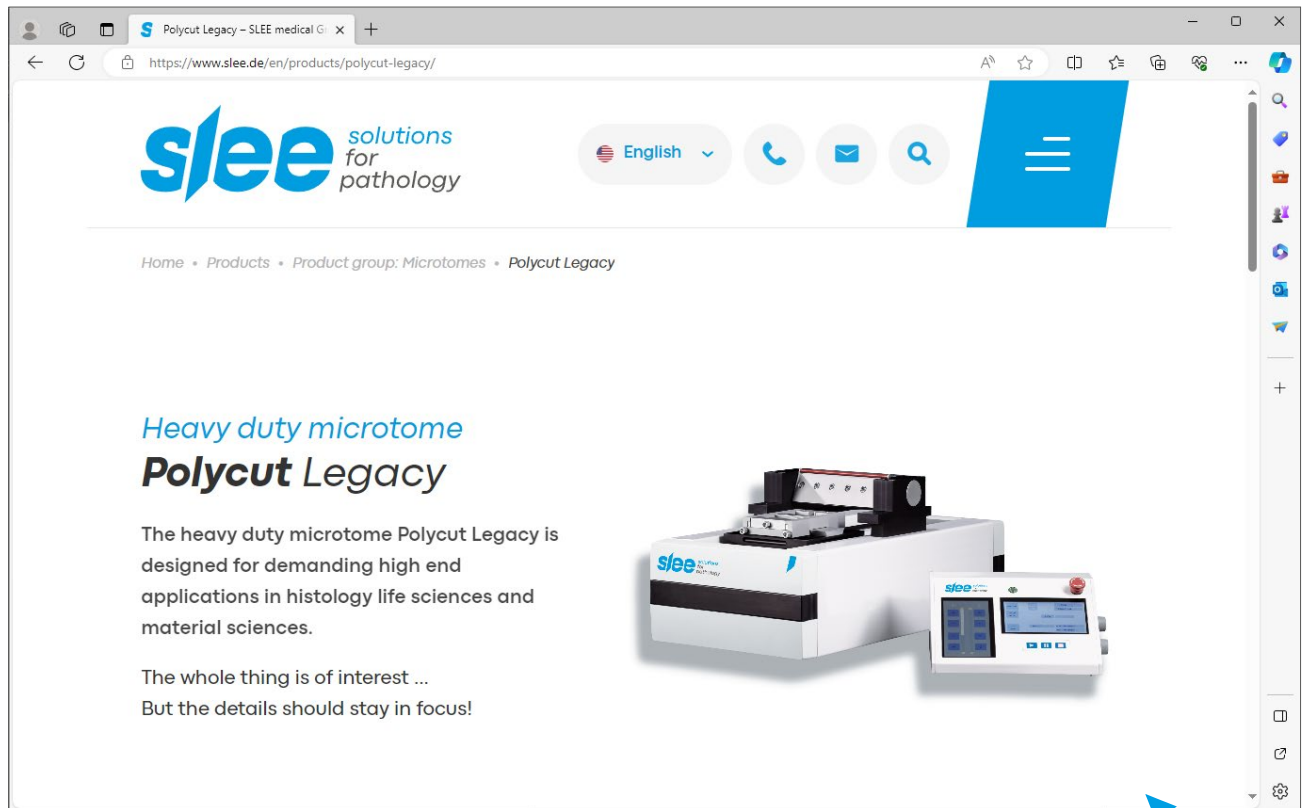


Product data sheet:



Manual:





Questions about the products? Comments on our portfolio? Need more information? Please contact us, we will be happy to help!

Please remember:

If you are exhibiting SLEE devices at a fair, congress or any other exhibition in your specific country - tell us about it! We would love to announce it on our homepage:

<https://www.slee.de/en/up-to-date/dates/category/trade-fairs-events/>

Best regards,

Stefan Schock

Mr. Maged Benjamin, Mr. Alexander Benjamin & Mr. Heiko Drzonek

SLEE medical GmbH • Am Neuberg 14

55268 Nieder-Olm • Germany

www.slee.de

T: +49 (0) 6136 76997-0

E: marketing@slee.de